

---

## Product Datasheet

### BCAS3 Antibody (orb1240126)

**Description**

BCAS3 Antibody

**Species/Host**

Rabbit

**Reactivity**

Human, Mouse, Rat

**Conjugation**

Unconjugated

**Tested**

ELISA, IF, IHC-P, WB

**Applications**
**Immunogen**

BCAS3 antibody was raised against an 18 amino acid synthetic peptide near the amino terminus of human BCAS3. The immunogen is located within amino acids 50 - 100 of BCAS3.

**Target**

BCAS3

**Preservatives**

BCAS3 Antibody is supplied in PBS containing 0.02% sodium azide.

**Form/Appearance**

Liquid

**Concentration**

1 mg/mL

**Storage**

BCAS3 antibody can be stored at 4°C for three months and -20°C, stable for up to one year. As with all antibodies care should be taken to avoid repeated freeze thaw cycles. Antibodies should not be exposed to prolonged high temperatures.

**Note**

For research use only

**Application notes**

BCAS3 antibody can be used for detection of BCAS3 by Western blot at 0.5 - 1 µg/mL. Antibody can also be used for immunohistochemistry starting at 5 µg/mL. For immunofluorescence start at 20 µg/mL. Antibody validated: Western Blot in rat samples; Immunohistochemistry in human samples and Immunofluorescence in human samples. All other applications and species not yet tested.

**Isotype**

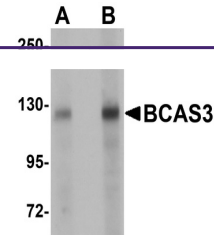
IgG

**Clonality**

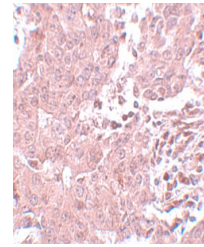
Polyclonal

**Uniprot ID**
**Q9H6U6**
**NCBI**
**EAW51415**
**Dilution Range**

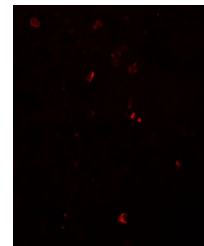
BCAS3 antibody can be used for detection of BCAS3 by Western blot at 0.5 - 1 µg/mL. Antibody can also be used for immunohistochemistry starting at 5 µg/mL. For immunofluorescence start at 20 µg/mL. Antibody validated: Western Blot in rat samples; Immunohistochemistry in human samples



Western blot analysis of BCAS3 in rat br...



Immunohistochemistry of BCAS3 in human b...



Immunofluorescence of BCAS3 in human bre...