

Product Datasheet

BCL2L14 Antibody (orb1240121)

Description

BCL2L14 Antibody

Species/Host

Rabbit

Reactivity

Human, Mouse, Rat

Conjugation

Unconjugated

Tested

ELISA, IF, IHC-P, WB

Applications

Immunogen

Bcl-G antibody was raised against a peptide corresponding to 15 amino acids near the N-terminus of human Bcl-G. The immunogen is located within the first 50 amino acids of Bcl-G.

Target

BCL2L14

Preservatives

Bcl-G Antibody is supplied in PBS containing 0.02% sodium azide.

Form/Appearance

Liquid

Concentration

1 mg/mL

Storage

Bcl-G antibody can be stored at 4°C for three months and -20°C, stable for up to one year. As with all antibodies care should be taken to avoid repeated freeze thaw cycles. Antibodies should not be exposed to prolonged high temperatures.

Note

For research use only

Application notes

Bcl-G antibody can be used for detection of Bcl-G by Western blot at 2.5 to 5 µg/mL. Antibody can also be used for immunohistochemistry starting at 2 µg/mL. For immunofluorescence start at 10 µg/mL. Antibody validated: Western Blot in human samples; Immunohistochemistry in mouse samples and Immunofluorescence in mouse samples. All other applications and species not yet tested.

Isotype

IgG

Clonality

Polyclonal

Uniprot ID

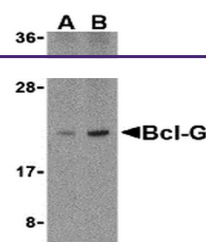
[Q9BZR8](#)

NCBI

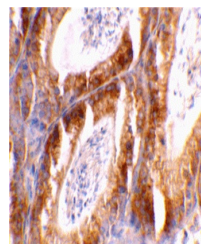
[NM_030766](#)

Dilution Range

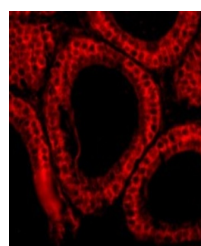
Bcl-G antibody can be used for detection of Bcl-G by Western blot at 2.5 to 5 µg/mL. Antibody can also be used for immunohistochemistry starting at 2 µg/mL. For immunofluorescence start at 10 µg/mL. Antibody validated: Western Blot in human samples; Immunohistochemistry in mouse samples and



Western blot analysis of Bcl-G in U937 c...



Immunohistochemical staining of mouse te...



Immunofluorescence of Bcl-G in Mouse Tes...