

Product Datasheet

BCL2L13 Antibody (orb1240120)

Description

BCL2L13 Antibody

Species/Host

Rabbit

Reactivity

Human, Mouse, Rat

Conjugation

Unconjugated

Tested

ELISA, IF, IHC-P, WB

Applications

Immunogen

Bcl-rambo antibody was raised against a 15 amino acid synthetic peptide from near the center of human Bcl-rambo. The immunogen is located within amino acids 280 - 330 of Bcl-rambo.

Target

BCL2L13

Preservatives

Bcl-rambo Antibody is supplied in PBS containing 0.02% sodium azide.

Form/Appearance

Liquid

Concentration

1 mg/mL

Storage

Bcl-rambo antibody can be stored at 4°C for three months and -20°C, stable for up to one year. As with all antibodies care should be taken to avoid repeated freeze thaw cycles. Antibodies should not be exposed to prolonged high temperatures.

Note

For research use only

Application notes

Bcl-rambo antibody can be used for the detection of Bcl-rambo by Western blot at 2 and 4 µg/mL. Antibody can also be used for immunohistochemistry starting at 10 µg/mL. For immunofluorescence start at 20 µg/mL. Antibody validated: Western Blot in human samples; Immunohistochemistry in human samples and Immunofluorescence in human samples. All other applications and species not yet tested.

Isotype

IgG

Clonality

Polyclonal

Uniprot ID

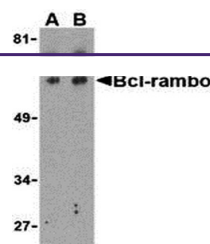
[Q9BXK5](#)

NCBI

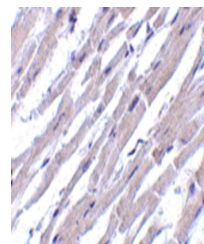
[AAH07658](#)

Dilution Range

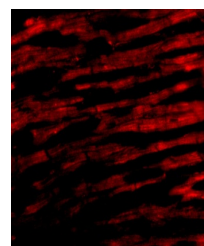
Bcl-rambo antibody can be used for the detection of Bcl-rambo by Western blot at 2 and 4 µg/mL. Antibody can also be used for immunohistochemistry starting at 10 µg/mL. For immunofluorescence start at 20 µg/mL. Antibody



Western blot analysis of Bcl-rambo in K5...



Immunohistochemistry of Bcl-rambo in hum...



Immunofluorescence of Bcl-rambo in Human...