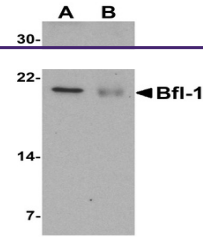
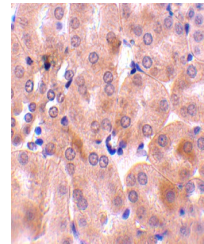

Product Datasheet

BCL2A1 Antibody (orb1240113)

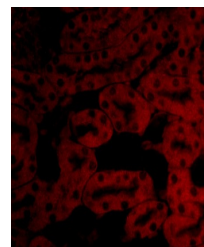
Description	BCL2A1 Antibody
Species/Host	Rabbit
Reactivity	Human, Mouse
Conjugation	Unconjugated
Tested Applications	ELISA, IF, IHC-P, WB
Immunogen	Bfl-1 antibody was raised against a 14 amino acid synthetic peptide from near the carboxy terminus of human Bfl-1. The immunogen is located within the last 50 amino acids of Bfl-1.
Target	BCL2A1
Preservatives	Bfl-1 Antibody is supplied in PBS containing 0.02% sodium azide.
Form/Appearance	Liquid
Concentration	1 mg/mL
Storage	Bfl-1 antibody can be stored at 4°C for three months and -20°C, stable for up to one year. As with all antibodies care should be taken to avoid repeated freeze thaw cycles. Antibodies should not be exposed to prolonged high temperatures.
Note	For research use only
Application notes	Bfl-1 antibody can be used for the detection of Bfl-1 by Western blot at 1 µg/mL. Antibody can also be used for immunohistochemistry starting at 10 µg/mL. For immunofluorescence start at 20 µg/mL. Antibody validated: Western Blot in human samples; Immunohistochemistry in mouse samples and Immunofluorescence in mouse samples. All other applications and species not yet tested.
Isotype	IgG
Clonality	Polyclonal
MW	Predicted: 19 kDa Observed: 20 kDa
Uniprot ID	Q16548
NCBI	NP_004040
Dilution Range	Bfl-1 antibody can be used for the detection of Bfl-1 by Western blot at 1 µg/mL. Antibody can also be used for immunohistochemistry starting at 10 µg/mL. For immunofluorescence start at 20 µg/mL. Antibody validated: Western Blot in human



Western blot analysis of Bfl-1 in (A) hu...



Immunohistochemistry of Bfl-1 in mouse k...



Immunofluorescence of Bfl-1 in Mouse Kid...