
Product Datasheet

BCL2A1 Antibody (orb1240112)

Description

BCL2A1 Antibody

Species/Host

Rabbit

Reactivity

Human, Mouse, Rat

Conjugation

Unconjugated

Tested

ELISA, IF, IHC-P, WB

Applications
Immunogen

Bfl-1 antibody was raised against a 14 amino acid synthetic peptide from near the amino terminus of human Bfl-1. The immunogen is located within the first 50 amino acids of Bfl-1.

Target

BCL2A1

Preservatives

Bfl-1 Antibody is supplied in PBS containing 0.02% sodium azide.

Form/Appearance

Liquid

Concentration

1 mg/mL

Storage

Bfl-1 antibody can be stored at 4°C up to one year. Antibodies should not be exposed to prolonged high temperatures.

Note

For research use only

Application notes

Bfl-1 antibody can be used for the detection of Bfl-1 by Western blot at 1 - 2 µg/mL. For immunofluorescence start at 20 µg/mL. Antibody validated: Western Blot in human samples; Immunohistochemistry in mouse samples and Immunofluorescence in mouse samples. All other applications and species not yet tested.

Isotype

IgG

Clonality

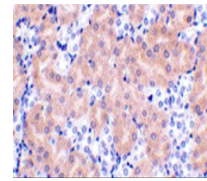
Polyclonal

MW

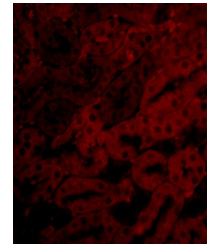
Predicted: 18, 19 kDa Observed: 22 kDa

Uniprot ID
[Q16548](#)
NCBI
[NP_004040](#)
Dilution Range

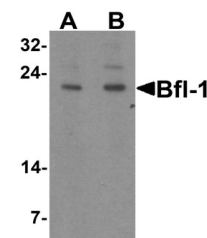
Bfl-1 antibody can be used for the detection of Bfl-1 by Western blot at 1 - 2 µg/mL. For immunofluorescence start at 20 µg/mL. Antibody validated: Western Blot in human samples; Immunohistochemistry in mouse samples and Immunofluorescence in mouse samples. All other applications and species not yet tested.



Immunohistochemistry of Bfl-1 in mouse k...



Immunofluorescence of Bfl-1 in Mouse Kid...



Western blot analysis of Bfl-1 in human ...