
Product Datasheet

BICD1 Antibody (orb1240110)

Description

BICD1 Antibody

Species/Host

Rabbit

Reactivity

Human, Mouse, Rat

Conjugation

Unconjugated

Tested Applications

ELISA, ICC, IF, WB

Immunogen

BICD1 antibody was raised against a 15 amino acid synthetic peptide from near the carboxy terminus of human BICD1. The immunogen is located within the last 50 amino acids of BICD1.

Target

BICD1

Preservatives

BICD1 Antibody is supplied in PBS containing 0.02% sodium azide.

Form/Appearance

Liquid

Concentration

1 mg/mL

Storage

BICD1 antibody can be stored at 4°C for three months and -20°C, stable for up to one year. As with all antibodies care should be taken to avoid repeated freeze thaw cycles. Antibodies should not be exposed to prolonged high temperatures.

Note

For research use only

Application notes

BICD1 antibody can be used for detection of BICD1 by Western blot at 1 µg/mL. Antibody can also be used for immunocytochemistry starting at 2.5 µg/mL. For immunofluorescence start at 10 µg/mL. Antibody validated: Western Blot in human samples; Immunocytochemistry in human samples and Immunofluorescence in human samples. All other applications and species not yet tested.

Isotype

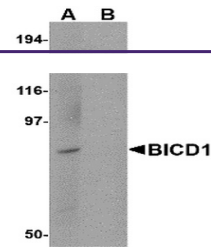
IgG

Clonality

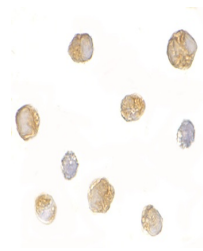
Polyclonal

Uniprot ID
[Q96G01](#)
NCBI
[NP_001705](#)
Dilution Range

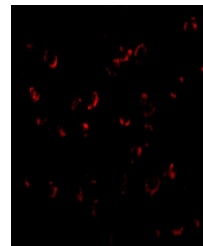
BICD1 antibody can be used for detection of BICD1 by Western blot at 1 µg/mL. Antibody can also be used for immunocytochemistry starting at 2.5 µg/mL. For immunofluorescence start at 10 µg/mL. Antibody validated: Western Blot in human samples; Immunocytochemistry in human samples and



Western blot analysis of BICD1 in Daudi ...



Immunocytochemistry of BICD1 in Daudi ce...



Immunofluorescence of BICD1 in Daudi cel...