

Product Datasheet

SH3GLB1 Antibody (orb1240108)

Description

SH3GLB1 Antibody

Species/Host

Rabbit

Reactivity

Human, Mouse

Conjugation

Unconjugated

Tested

ELISA, ICC, WB

Applications

Immunogen

BIF antibody was raised against a 15 amino acid synthetic peptide from near the carboxy terminus of human BIF. The immunogen is located within the last 50 amino acids of Bif.

Target

SH3GLB1

Preservatives

Bif Antibody is supplied in PBS containing 0.02% sodium azide.

Form/Appearance

Liquid

Concentration

1 mg/mL

Storage

Bif antibody can be stored at 4°C for three months and -20°C, stable for up to one year. As with all antibodies care should be taken to avoid repeated freeze thaw cycles. Antibodies should not be exposed to prolonged high temperatures.

Note

For research use only

Application notes

BIF antibody can be used for the detection of BIF by Western blot at 1 - 2 µg/mL. Antibody can also be used for immunocytochemistry starting at 10 µg/mL. Antibody validated: Western Blot in human samples and Immunocytochemistry in human samples. All other applications and species not yet tested.

Isotype

IgG

Clonality

Polyclonal

Uniprot ID

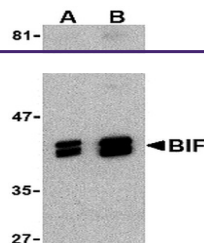
[Q9Y371](#)

NCBI

[AAK27365](#)

Dilution Range

BIF antibody can be used for the detection of BIF by Western blot at 1 - 2 µg/mL. Antibody can also be used for immunocytochemistry starting at 10 µg/mL. Antibody validated: Western Blot in human samples and Immunocytochemistry in human samples. All other applications and species not yet tested.



Western blot analysis of BIF in HeLa cells.



Immunocytochemistry of BIF in HeLa cells with ...