

---

## Product Datasheet

### TFF3 Antibody (orb1240106)

**Description**

TFF3 Antibody

**Species/Host**

Rabbit

**Reactivity**

Human, Mouse, Rat

**Conjugation**

Unconjugated

**Tested Applications**

ELISA, ICC, IF, IHC-P, WB

**Immunogen**

TFF3 antibody was raised against a 16 amino acid synthetic peptide near the carboxy terminus of human TFF3. The immunogen is located within the last 50 amino acids of TFF3.

**Target**

TFF3

**Preservatives**

TFF3 Antibody is supplied in PBS containing 0.02% sodium azide.

**Form/Appearance**

Liquid

**Concentration**

1 mg/mL

**Storage**

TFF3 antibody can be stored at 4°C for three months and -20°C, stable for up to one year. As with all antibodies care should be taken to avoid repeated freeze thaw cycles. Antibodies should not be exposed to prolonged high temperatures.

**Note**

For research use only

**Application notes**

TFF3 antibody can be used for detection of TFF3 by Western blot at 1 - 2 µg/mL. Antibody can also be used for immunohistochemistry starting at 2 µg/mL and immunocytochemistry at starting at 2 µg/mL. For immunofluorescence start at 20 µg/mL. Antibody validated: Western Blot in human samples; Immunohistochemistry in human samples; Immunocytochemistry in human samples and Immunofluorescence in human samples. All other applications and species not yet tested.

**Isotype**

IgG

**Clonality**

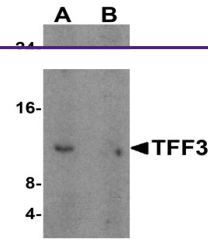
Polyclonal

**MW**

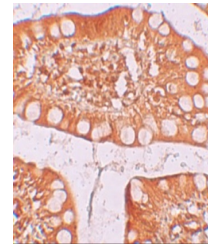
Predicted: 10 kDa Observed: 11 kDa

**Uniprot ID**
[Q07654](#)
**NCBI**
[NP\\_003217](#)
**Dilution Range**

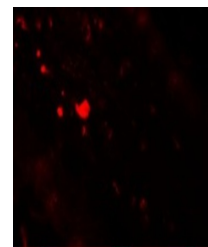
TFF3 antibody can be used for detection of TFF3 by Western blot at 1 - 2 µg/mL. Antibody can also be used for immunohistochemistry starting at 2 µg/mL



Western blot analysis of TFF3 in human c...



Immunohistochemistry of TFF3 in human sm...



Immunofluorescence of TFF3 in Human Smal...