
Product Datasheet

PTRH2 Antibody (orb1240101)

Description

PTRH2 Antibody

Species/Host

Rabbit

Reactivity

Human, Mouse, Rat

Conjugation

Unconjugated

Tested Applications

ELISA, ICC, IF, WB

Immunogen

Bit1 antibody was raised against a 15 amino acid synthetic peptide from near the amino-terminus of human Bit1. The immunogen is located within amino acids 20 - 70 of Bit1.

Target

PTRH2

Preservatives

Bit1 Antibody is supplied in PBS containing 0.02% sodium azide.

Form/Appearance

Liquid

Concentration

1 mg/mL

Storage

Bit1 antibody can be stored at 4°C for three months and -20°C, stable for up to one year. As with all antibodies care should be taken to avoid repeated freeze thaw cycles. Antibodies should not be exposed to prolonged high temperatures.

Note

For research use only

Application notes

Bit1 antibody can be used for the detection of Bit1 by Western blot at 1 - 4 µg/mL. Antibody can also be used for immunocytochemistry starting at 2 µg/mL. For immunofluorescence start at 20 µg/mL. Antibody validated: Western Blot in mouse samples; Immunocytochemistry in mouse samples and Immunofluorescence in mouse samples. All other applications and species not yet tested.

Isotype

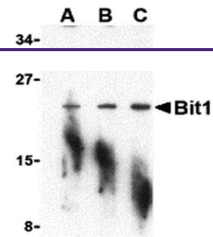
IgG

Clonality

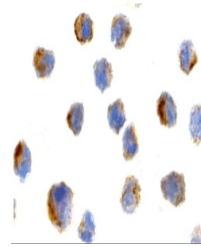
Polyclonal

Uniprot ID
[Q9Y3E5](#)
NCBI
[NP_057161](#)
Dilution Range

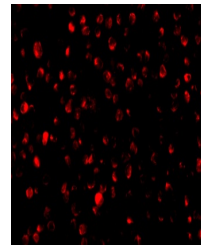
Bit1 antibody can be used for the detection of Bit1 by Western blot at 1 - 4 µg/mL. Antibody can also be used for immunocytochemistry starting at 2 µg/mL. For immunofluorescence start at 20 µg/mL. Antibody validated: Western Blot in mouse samples; Immunocytochemistry in mouse samples and



Western blot analysis of Bit1 in A-20 ce...



Immunocytochemistry of Bit1 in 3T3 cells...



Immunofluorescence of Bit1 in 3T3 cells ...