
Product Datasheet

PRDM1 Antibody (orb1240099)

Description

PRDM1 Antibody

Species/Host

Rabbit

Reactivity

Human, Mouse, Rat

Conjugation

Unconjugated

Tested Applications

ELISA, IF, WB

Applications
Immunogen

Blimp-1 antibody was raised against a 14 amino acid peptide from near the carboxy terminus of human Blimp-1. The immunogen is located within the last 50 amino acids of Blimp-1.

Target

PRDM1

Preservatives

Blimp-1 Antibody is supplied in PBS containing 0.02% sodium azide.

Form/Appearance

Liquid

Concentration

1 mg/mL

Storage

Blimp-1 antibody can be stored at 4°C for three months and -20°C, stable for up to one year. As with all antibodies care should be taken to avoid repeated freeze thaw cycles. Antibodies should not be exposed to prolonged high temperatures.

Note

For research use only

Application notes

Blimp-1 antibody can be used for detection of Blimp-1 by Western blot at 0.5 - 1 µg/mL. Antibody can also be used for immunofluorescence starting at 20 µg/mL. For immunofluorescence start at 20 µg/mL. Antibody validated: Western Blot in human samples and Immunofluorescence in mouse samples. All other applications and species not yet tested.

Isotype

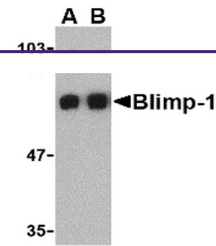
IgG

Clonality

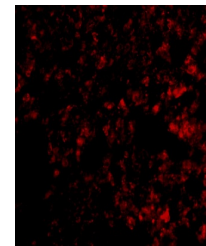
Polyclonal

Uniprot ID
[O75626](#)
NCBI
[NP_001189](#)
Dilution Range

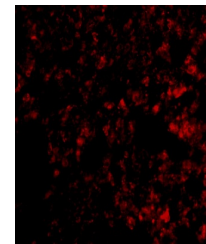
Blimp-1 antibody can be used for detection of Blimp-1 by Western blot at 0.5 - 1 µg/mL. Antibody can also be used for immunofluorescence starting at 20 µg/mL. For immunofluorescence start at 20 µg/mL. Antibody validated: Western Blot in human samples and Immunofluorescence in mouse samples. All other applications and species not yet tested.



Western blot analysis of Blimp-1 in A549...



Immunofluorescence of Blimp-1 in mouse L...



Immunofluorescence of Blimp-1 in Mouse L...