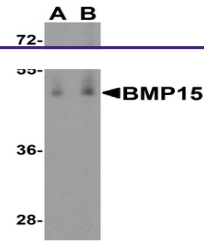


Product Datasheet

BMP15 Antibody (orb1240094)

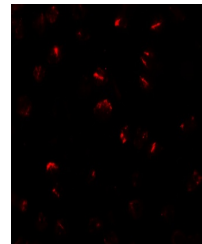
Description	BMP15 Antibody
Species/Host	Rabbit
Reactivity	Human, Mouse
Conjugation	Unconjugated
Tested Applications	ELISA, ICC, IF, WB
Immunogen	BMP15 antibody was raised against a 16 amino acid synthetic peptide near the amino terminus of human BMP15. The immunogen is located within amino acids 30 - 80 of BMP15.
Target	BMP15
Preservatives	BMP15 Antibody is supplied in PBS containing 0.02% sodium azide.
Form/Appearance	Liquid
Concentration	1 mg/mL
Storage	BMP15 antibody can be stored at 4°C for three months and -20°C, stable for up to one year. As with all antibodies care should be taken to avoid repeated freeze thaw cycles. Antibodies should not be exposed to prolonged high temperatures.
Note	For research use only
Application notes	BMP15 antibody can be used for detection of BMP15 by Western blot at 1 - 2 µg/mL. Antibody can also be used for immunocytochemistry starting at 2.5 µg/mL. For immunofluorescence start at 2.5 µg/mL. Antibody validated: Western Blot in human samples; Immunocytochemistry in mouse samples and Immunofluorescence in mouse samples. All other applications and species not yet tested.
Isotype	IgG
Clonality	Polyclonal
MW	Predicted: 45 kDa Observed: 50 kDa
Uniprot ID	O95972
NCBI	NP_005439
Dilution Range	BMP15 antibody can be used for detection of BMP15 by Western blot at 1 - 2 µg/mL. Antibody can also be used for immunocytochemistry starting at 2.5 µg/mL. For immunofluorescence start at 2.5 µg/mL. Antibody validated: Western Blot in human samples;



Western blot analysis of BMP15 in human ...



Immunocytochemistry of BMP15 in 3T3 cell...



Immunofluorescence of BMP15 in 3T3 cells...