
Product Datasheet

BNIP3L Antibody (orb1240093)

Description

BNIP3L Antibody

Species/Host

Rabbit

Reactivity

Human

Conjugation

Unconjugated

Tested

ELISA, IF, IHC-P, WB

Applications
Immunogen

Bnip3L antibody was raised against a 16 amino acid peptide near the center of human Bnip3L. The immunogen is located within amino acids 60 - 110 of Bnip3L.

Target

BNIP3L

Preservatives

Bnip3L Antibody is supplied in PBS containing 0.02% sodium azide.

Form/Appearance

Liquid

Concentration

1 mg/mL

Storage

Bnip3L antibody can be stored at 4°C up to one year. Antibodies should not be exposed to prolonged high temperatures.

Note

For research use only

Application notes

Bnip3L antibody can be used for detection of Bnip3L by Western blot at 1 µg/mL. Antibody can also be used for immunohistochemistry starting at 2 µg/mL. For immunofluorescence start at 10 µg/mL. Antibody validated: Western Blot in human samples; Immunohistochemistry in human samples and Immunofluorescence in human samples. All other applications and species not yet tested.

Isotype

IgG

Clonality

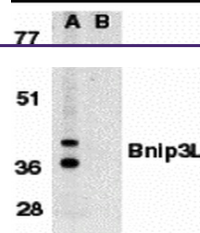
Polyclonal

MW

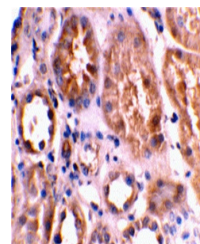
Predicted: 24 kDa Observed: 36, 40 kDa

Uniprot ID
[O60238](#)
NCBI
[NP_004322](#)
Dilution Range

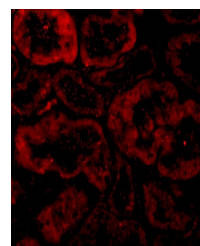
Bnip3L antibody can be used for detection of Bnip3L by Western blot at 1 µg/mL. Antibody can also be used for immunohistochemistry starting at 2 µg/mL. For immunofluorescence start at 10 µg/mL. Antibody validated: Western Blot in human samples; Immunohistochemistry in human samples and Immunofluorescence in human samples. All other



Western blot analysis of Bnip3L in K562 ...



Immunohistochemical staining of human ki...



Immunofluorescence of Bnip3L in Human Ki...