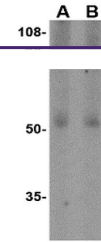


---

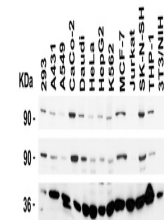
## Product Datasheet

### CD248 Antibody (orb1240092)

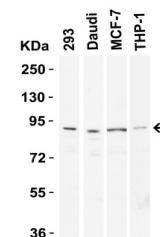
<b>Description</b>	CD248 Antibody
<b>Species/Host</b>	Rabbit
<b>Reactivity</b>	Human
<b>Conjugation</b>	Unconjugated
<b>Tested Applications</b>	ELISA, IF, IHC-P, WB
<b>Immunogen</b>	Anti-TEM-1 antibody (orb1240092) was raised against a peptide corresponding to 14 amino acids near the amino terminus of human TEM-1. The immunogen is located within amino acids 40-90 of TEM-1
<b>Target</b>	CD248
<b>Preservatives</b>	TEM1 Antibody is supplied in PBS containing 0.02% sodium azide.
<b>Form/Appearance</b>	Liquid
<b>Concentration</b>	1 mg/mL
<b>Storage</b>	TEM1 antibody can be stored at 4°C for three months and -20°C, stable for up to one year. As with all antibodies care should be taken to avoid repeated freeze thaw cycles. Antibodies should not be exposed to prolonged high temperatures.
<b>Note</b>	For research use only
<b>Isotype</b>	IgG
<b>Clonality</b>	Polyclonal
<b>MW</b>	Predicted: 81kD Observed: 90 kD (post-modifications: 27 O-linked glycosylations)
<b>Uniprot ID</b>	<a href="#">Q9HCU0</a>
<b>NCBI</b>	<a href="#">NP_065137</a>
<b>Dilution Range</b>	WB: 0.5-2 µg/mL; IHC-P: 2.5 µg/mL; IF: 20 µg/mL. Antibody validated: Western Blot in human and mouse samples; Immunohistochemistry in human samples and Immunofluorescence in human samples. All other applications and species not yet tested.
<b>Expiration Date</b>	12 months from date of receipt.



Western Blot Validation in Human Colon T...



Independent Antibody Validation (IAV) vi...



Western Blot Validation in Human Tissue....