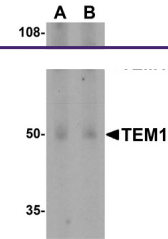
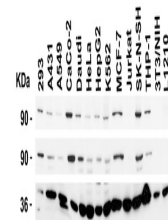

Product Datasheet

CD248 Antibody (orb1240088)

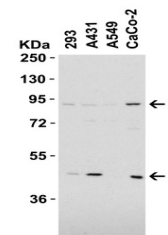
Description	CD248 Antibody
Species/Host	Rabbit
Reactivity	Human
Conjugation	Unconjugated
Tested Applications	ELISA, IF, IHC-P, WB
Immunogen	Anti-TEM-1 antibody (orb1240088) was raised against a peptide corresponding to 14 amino acids near the carboxy terminus of human TEM-1. The immunogen is located within the last 50 amino acids of TEM-1.
Target	CD248
Preservatives	TEM1 Antibody is supplied in PBS containing 0.02% sodium azide.
Form/Appearance	Liquid
Concentration	1 mg/mL
Storage	TEM1 antibody can be stored at 4°C up to one year. Antibodies should not be exposed to prolonged high temperatures.
Note	For research use only
Isotype	IgG
Clonality	Polyclonal
MW	Predicted: 81kD and 46kD Observed: 90 kD (post-modifications: 27 O-linked glycosylations) and 46kD
Uniprot ID	Q9HCU0
NCBI	NP_065137
Dilution Range	WB: 0.5-2 µg/mL; IHC-P: 2.5 µg/mL; IF: 20 µg/mL. Antibody validated: Western Blot in human and mouse samples; Immunohistochemistry in human samples and Immunofluorescence in human samples. All other applications and species not yet tested.
Expiration Date	12 months from date of receipt.



Western Blot Validation in Human Colon T...



Independent Antibody Validation (IAV) vi...



Western Blot Validation in Human Cell Li...