
Product Datasheet

HAPLN2 Antibody (orb1240087)

Description

HAPLN2 Antibody

Species/Host

Rabbit

Reactivity

Human, Mouse, Rat

Conjugation

Unconjugated

Tested Applications

ELISA, IF, IHC-P, WB

Immunogen

BRAL1 antibody was raised against a 12 amino acid synthetic peptide from near the center of human BRAL1. The immunogen is located within amino acids 130 - 180 of BRAL1.

Target

HAPLN2

Preservatives

BRAL1 Antibody is supplied in PBS containing 0.02% sodium azide.

Form/Appearance

Liquid

Concentration

1 mg/mL

Storage

Antibody can be stored at 4°C up to one year. Antibodies should not be exposed to prolonged high temperatures.

Note

For research use only

Application notes

BRAL1 antibody can be used for the detection of BRAL1 by Western blot at 1 - 2 µg/mL. Antibody can also be used for immunohistochemistry starting at 2.5 µg/mL. For immunofluorescence start at 20 µg/mL. Antibody validated: Western Blot in human samples; Immunohistochemistry in human samples and Immunofluorescence in human samples. All other applications and species not yet tested.

Isotype

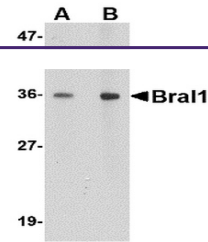
IgG

Clonality

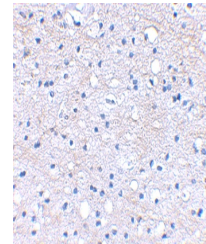
Polyclonal

Uniprot ID
[Q9GZV7](#)
NCBI
[NP_068589](#)
Dilution Range

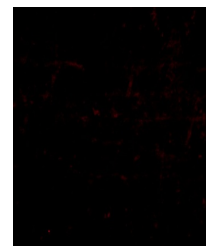
BRAL1 antibody can be used for the detection of BRAL1 by Western blot at 1 - 2 µg/mL. Antibody can also be used for immunohistochemistry starting at 2.5 µg/mL. For immunofluorescence start at 20 µg/mL. Antibody validated: Western Blot in human samples; Immunohistochemistry in human samples and Immunofluorescence in human samples. All other applications and species not yet tested.



Western blot analysis of BRAL1 in human ...



Immunohistochemical staining of human br...



Immunofluorescence of BRAL1 in Human Bra...