

---

## Product Datasheet

### BRCC3 Antibody (orb1240086)

**Description**

BRCC3 Antibody

**Species/Host**

Rabbit

**Reactivity**

Human, Mouse, Rat

**Conjugation**

Unconjugated

**Tested Applications**

ELISA, IF, IHC-P, WB

**Immunogen**

BRCC36 antibody was raised against a 18 amino acid synthetic peptide from near the amino terminus of human BRCC36. The immunogen is located within amino acids 20 - 70 of BRCC36.

**Target**

BRCC3

**Preservatives**

BRCC36 Antibody is supplied in PBS containing 0.02% sodium azide.

**Form/Appearance**

Liquid

**Concentration**

1 mg/mL

**Storage**

BRCC36 antibody can be stored at 4°C for three months and -20°C, stable for up to one year. As with all antibodies care should be taken to avoid repeated freeze thaw cycles. Antibodies should not be exposed to prolonged high temperatures.

**Note**

For research use only

**Application notes**

BRCC36 antibody can be used for detection of BRCC36 by Western blot at 0.5 - 2 µg/mL. Antibody can also be used for immunohistochemistry starting at 2.5 µg/mL. For immunofluorescence start at 20 µg/mL. Antibody validated: Western Blot in human samples; Immunohistochemistry in human samples and Immunofluorescence in human samples. All other applications and species not yet tested.

**Isotype**

IgG

**Clonality**

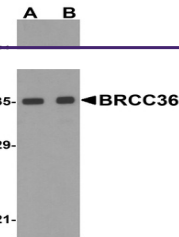
Polyclonal

**MW**

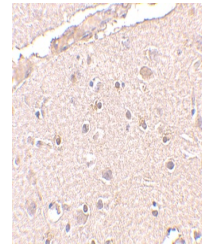
Predicted: 35 kDa Observed: 35 kDa

**Uniprot ID**
[P46736](#)
**NCBI**
[NP\\_077308](#)
**Dilution Range**

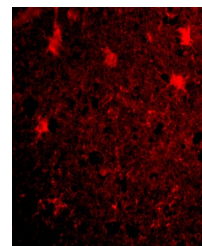
BRCC36 antibody can be used for detection of BRCC36 by Western blot at 0.5 - 2 µg/mL. Antibody can also be used for immunohistochemistry starting at 2.5 µg/mL. For immunofluorescence start at 20 µg/mL. Antibody validated: Western Blot in human



Western blot analysis of BRCC36 in MCF7 ...



Immunohistochemistry of BRCC36 in human ...



Immunofluorescence of BRCC36 in Human Br...