
Product Datasheet

BRE Antibody (orb1240085)

Description

BRE Antibody

Species/Host

Rabbit

Reactivity

Human, Mouse, Rat

Conjugation

Unconjugated

Tested Applications

ELISA, IF, IHC-P, WB

Immunogen

BRCC45 antibody was raised against a 18 amino acid synthetic peptide from near the amino terminus of human BRCC45. The immunogen is located within the last 50 amino acids of BRCC45.

Target

BRE

Preservatives

BRCC45 Antibody is supplied in PBS containing 0.02% sodium azide.

Form/Appearance

Liquid

Concentration

1 mg/mL

Storage

BRCC45 antibody can be stored at 4°C for three months and -20°C, stable for up to one year. As with all antibodies care should be taken to avoid repeated freeze thaw cycles. Antibodies should not be exposed to prolonged high temperatures.

Note

For research use only

Application notes

BRCC45 antibody can be used for detection of BRCC45 by Western blot at 1 µg/mL. Antibody can also be used for immunohistochemistry starting at 2.5 µg/mL. For immunofluorescence start at 20 µg/mL. Antibody validated: Western Blot in human samples; Immunohistochemistry in human samples and Immunofluorescence in human samples. All other applications and species not yet tested.

Isotype

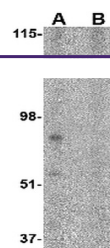
IgG

Clonality

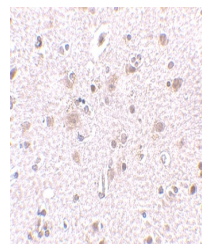
Polyclonal

Uniprot ID
[Q9NXR7](#)
NCBI
[NP_004890](#)
Dilution Range

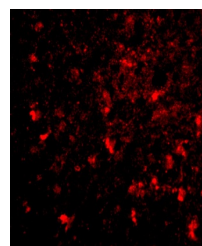
BRCC45 antibody can be used for detection of BRCC45 by Western blot at 1 µg/mL. Antibody can also be used for immunohistochemistry starting at 2.5 µg/mL. For immunofluorescence start at 20 µg/mL. Antibody validated: Western Blot in human samples; Immunohistochemistry in human samples



Western blot analysis of BRCC45 in HeLa ...



Immunohistochemistry of BRCC45 in human ...



Immunofluorescence of BRCC45 in human br...