
Product Datasheet

BRSK1 Antibody (orb1240083)

Description

BRSK1 Antibody

Species/Host

Rabbit

Reactivity

Human, Mouse, Rat

Conjugation

Unconjugated

Tested

ELISA, IF, IHC-P, WB

Applications
Immunogen

BRSK1 antibody was raised against a 28 amino acid synthetic peptide from near the center of human BRSK1. The immunogen is located within amino acids 450 - 500 of BRSK1.

Target

BRSK1

Preservatives

BRSK1 Antibody is supplied in PBS containing 0.02% sodium azide.

Form/Appearance

Liquid

Concentration

1 mg/mL

Storage

BRSK1 antibody can be stored at 4°C for three months and -20°C, stable for up to one year. As with all antibodies care should be taken to avoid repeated freeze thaw cycles. Antibodies should not be exposed to prolonged high temperatures.

Note

For research use only

Application notes

BRSK1 antibody can be used for detection of BRSK1 by Western blot at 0.5 - 2 µg/mL. Antibody can also be used for immunohistochemistry starting at 5 µg/mL. For immunofluorescence start at 20 µg/mL. Antibody validated: Western Blot in human samples; Immunohistochemistry in human samples and Immunofluorescence in human samples. All other applications and species not yet tested.

Isotype

IgG

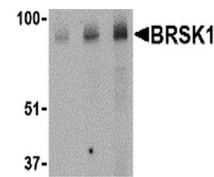
Clonality

Polyclonal

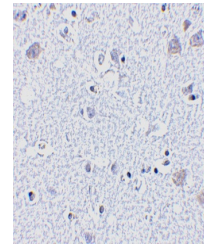
Uniprot ID
[Q8TDC3](#)
NCBI
[Q8TDC3](#)
Dilution Range

BRSK1 antibody can be used for detection of BRSK1 by Western blot at 0.5 - 2 µg/mL. Antibody can also be used for immunohistochemistry starting at 5 µg/mL. For immunofluorescence start at 20 µg/mL. Antibody validated: Western Blot in human samples; Immunohistochemistry in human samples

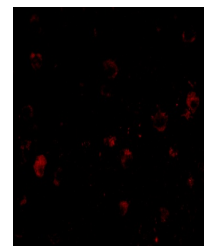
A B C



Western blot analysis of BRSK1 in human ...



Immunohistochemistry of BRSK1 in human b...



Immunofluorescence of BRSK1 in Human Bra...