
Product Datasheet

BRSK2 Antibody (orb1240082)

Description

BRSK2 Antibody

Species/Host

Rabbit

Reactivity

Human, Mouse

Conjugation

Unconjugated

Tested

ELISA, IF, IHC-P, WB

Applications
Immunogen

BRSK2 antibody was raised against a 23 amino acid synthetic peptide from near the carboxy terminus of human BRSK2. The immunogen is located within amino acids 630 - 680 of BRSK2.

Target

BRSK2

Preservatives

BRSK2 Antibody is supplied in PBS containing 0.02% sodium azide.

Form/Appearance

Liquid

Concentration

1 mg/mL

Storage

BRSK2 antibody can be stored at 4°C for three months and -20°C, stable for up to one year. As with all antibodies care should be taken to avoid repeated freeze thaw cycles. Antibodies should not be exposed to prolonged high temperatures.

Note

For research use only

Application notes

BRSK2 antibody can be used for detection of BRSK2 by Western blot at 0.5 - 2 µg/mL. Antibody can also be used for immunohistochemistry starting at 5 µg/mL. For immunofluorescence start at 20 µg/mL. Antibody validated: Western Blot in human samples; Immunohistochemistry in human samples and Immunofluorescence in human samples. All other applications and species not yet tested.

Isotype

IgG

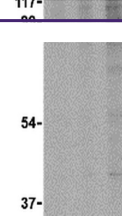
Clonality

Polyclonal

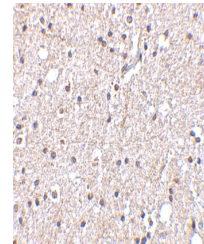
Uniprot ID
[Q81WQ3](#)
NCBI
[Q81WQ3](#)
Dilution Range

BRSK2 antibody can be used for detection of BRSK2 by Western blot at 0.5 - 2 µg/mL. Antibody can also be used for immunohistochemistry starting at 5 µg/mL. For immunofluorescence start at 20 µg/mL. Antibody validated: Western Blot in human samples; Immunohistochemistry in human samples

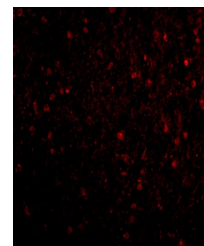
A B C



Western blot analysis of BRSK2 in human ...



Immunohistochemistry of BRSK2 in human b...



Immunofluorescence of BRSK2 in Human Bra...