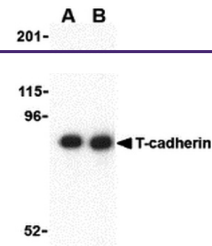
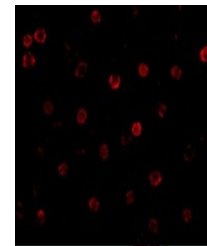

Product Datasheet

ENTPD3 Antibody (orb1240081)

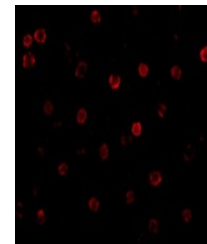
Description	ENTPD3 Antibody
Species/Host	Rabbit
Reactivity	Human, Mouse
Conjugation	Unconjugated
Tested Applications	ELISA, IF, IHC-P, WB
Immunogen	T-cadherin antibody was raised against a 15 amino acid synthetic peptide from near the amino terminus of human T-cadherin. The immunogen is located within amino acids 150 - 200 of T-cadherin.
Target	ENTPD3
Preservatives	T-cadherin Antibody is supplied in PBS containing 0.02% sodium azide.
Form/Appearance	Liquid
Concentration	1 mg/mL
Storage	T-cadherin antibody can be stored at 4°C for three months and -20°C, stable for up to one year. As with all antibodies care should be taken to avoid repeated freeze thaw cycles. Antibodies should not be exposed to prolonged high temperatures.
Note	For research use only
Application notes	T-cadherin antibody can be used for the detection of T-cadherin by Western blot at 0.5 - 1 µg/mL. Antibody can also be used for immunohistochemistry starting at 5 µg/mL and immunocytochemistry starting at 20 µg/mL. For immunofluorescence start at 20 µg/mL. Antibody validated: Western Blot in mouse samples; Immunohistochemistry in mouse samples and Immunofluorescence in human and mouse samples. All other applications and species not yet tested.
Isotype	IgG
Clonality	Polyclonal
MW	Predicted: 78, 84 kDa Observed: 85 kDa
Uniprot ID	O75355
NCBI	NP_001248
Dilution Range	T-cadherin antibody can be used for the detection of T-cadherin by Western blot at 0.5 - 1 µg/mL. Antibody can also be used for immunohistochemistry



Western blot analysis of T-cadherin in 3...



Immunofluorescence of T-cadherin in K562...



Immunofluorescence of T-cadherin in 3T3 ...