

---

## Product Datasheet

### BUB1 Antibody (orb1240079)

**Description**

BUB1 Antibody

**Species/Host**

Rabbit

**Reactivity**

Human, Mouse

**Conjugation**

Unconjugated

**Tested Applications**

ELISA, ICC, IF, WB

**Immunogen**

Bub1 antibody was raised against a 19 amino acid synthetic peptide from near the amino terminus of human Bub1. The immunogen is located within amino acids 40 - 90 of Bub1.

**Target**

BUB1

**Preservatives**

Bub1 Antibody is supplied in PBS containing 0.02% sodium azide.

**Form/Appearance**

Liquid

**Concentration**

1 mg/mL

**Storage**

Bub1 antibody can be stored at 4°C for three months and -20°C, stable for up to one year. As with all antibodies care should be taken to avoid repeated freeze thaw cycles. Antibodies should not be exposed to prolonged high temperatures.

**Note**

For research use only

**Application notes**

Bub1 antibody can be used for detection of bub1 by Western blot at 2 - 4 µg/mL. Antibody can also be used for immunocytochemistry starting at 10 µg/mL. For immunofluorescence start at 20 µg/mL. Antibody validated: Western Blot in mouse samples; Immunocytochemistry in mouse samples and Immunofluorescence in mouse samples. All other applications and species not yet tested.

**Isotype**

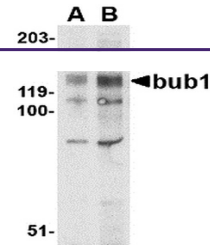
IgG

**Clonality**

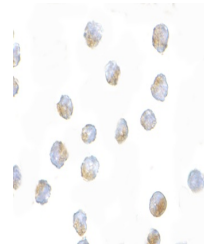
Polyclonal

**Uniprot ID**
[O43683](#)
**NCBI**
[O43683](#)
**Dilution Range**

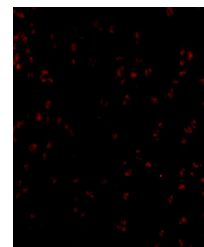
Bub1 antibody can be used for detection of bub1 by Western blot at 2 - 4 µg/mL. Antibody can also be used for immunocytochemistry starting at 10 µg/mL. For immunofluorescence start at 20 µg/mL. Antibody validated: Western Blot in mouse samples; Immunocytochemistry in mouse samples and



Western blot analysis of bub1 in A-20 ly...



Immunocytochemistry of Bub1 in A20 cells...



Immunofluorescence of Bub1 in A20 cells ...