
Product Datasheet

SYNPO Antibody (orb1240073)

Description

SYNPO Antibody

Species/Host

Rabbit

Reactivity

Human, Mouse, Rat

Conjugation

Unconjugated

Tested Applications

ELISA, IF, IHC-P, WB

Immunogen

SYNPO antibody was raised against a 17 amino acid synthetic peptide near the carboxy terminus of human SYNPO. The immunogen is located within the last 50 amino acids of SYNPO.

Target

SYNPO

Preservatives

SYNPO Antibody is supplied in PBS containing 0.02% sodium azide.

Form/Appearance

Liquid

Concentration

1 mg/mL

Storage

SYNPO antibody can be stored at 4°C for three months and -20°C, stable for up to one year. As with all antibodies care should be taken to avoid repeated freeze thaw cycles. Antibodies should not be exposed to prolonged high temperatures.

Note

For research use only

Application notes

SYNPO antibody can be used for detection of SYNPO by Western blot at 1 - 2 µg/mL. Antibody can also be used for immunohistochemistry starting at 2.5 µg/mL. For immunofluorescence start at 20 µg/mL. Antibody validated: Western Blot in rat samples; Immunohistochemistry in human and mouse samples and Immunofluorescence in human and mouse samples. All other applications and species not yet tested.

Isotype

IgG

Clonality

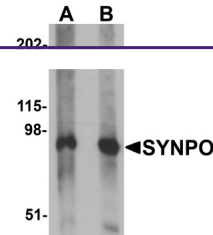
Polyclonal

MW

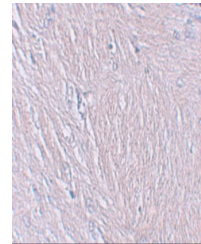
Predicted: 75, 99, 102 kDa Observed: 95 kDa

Uniprot ID
[Q8N3V7](#)
NCBI
[NP_001159680](#)
Dilution Range

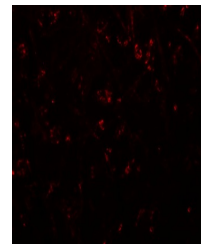
SYNPO antibody can be used for detection of SYNPO by Western blot at 1 - 2 µg/mL. Antibody can also be used for immunohistochemistry starting at 2.5 µg/mL. For immunofluorescence start at 20



Western blot analysis of SYNPO in rat br...



Immunohistochemistry of SYNPO in human b...



Immunofluorescence of SYNPO in human bra...