
Product Datasheet

CALHM1 Antibody (orb1240071)

Description

CALHM1 Antibody

Species/Host

Rabbit

Reactivity

Human, Mouse, Rat

Conjugation

Unconjugated

Tested

ELISA, IF, IHC-P, WB

Applications
Immunogen

CALHM1 antibody was raised against a 17 amino acid synthetic peptide near the amino terminus of human CALHM1. The immunogen is located within amino acids 60 - 110 of CALHM1.

Target

CALHM1

Preservatives

CALHM1 Antibody is supplied in PBS containing 0.02% sodium azide.

Form/Appearance

Liquid

Concentration

1 mg/mL

Storage

CALHM1 antibody can be stored at 4°C for three months and -20°C, stable for up to one year. As with all antibodies care should be taken to avoid repeated freeze thaw cycles. Antibodies should not be exposed to prolonged high temperatures.

Note

For research use only

Application notes

CALHM1 antibody can be used for detection of CALHM1 by Western blot at 1 - 2 µg/mL. Antibody can also be used for immunohistochemistry starting at 5 µg/mL. For immunofluorescence start at 20 µg/mL. Antibody validated: Western Blot in rat samples; Immunohistochemistry in rat samples and Immunofluorescence in rat samples. All other applications and species not yet tested.

Isotype

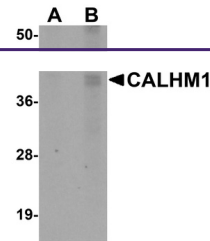
IgG

Clonality

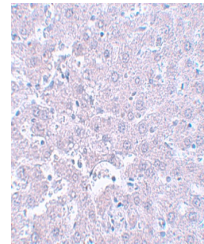
Polyclonal

Uniprot ID
[Q8IU99](#)
NCBI
[NP_001001412](#)
Dilution Range

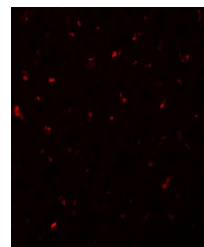
CALHM1 antibody can be used for detection of CALHM1 by Western blot at 1 - 2 µg/mL. Antibody can also be used for immunohistochemistry starting at 5 µg/mL. For immunofluorescence start at 20 µg/mL. Antibody validated: Western Blot in rat samples; Immunohistochemistry in rat samples and



Western blot analysis of CALHM1 in rat li...



Immunohistochemistry of CALHM1 in rat li...



Immunofluorescence of CALHM1 in Rat Live...