

---

## Product Datasheet

### CAPN6 Antibody (orb1240070)

**Description**

CAPN6 Antibody

**Species/Host**

Rabbit

**Reactivity**

Human, Mouse, Rat

**Conjugation**

Unconjugated

**Tested Applications**

ELISA, IF, IHC-P, WB

**Immunogen**

CAPN6 antibody was raised against a 18 amino acid synthetic peptide from near the carboxy terminus of human CAPN6. The immunogen is located within the last 50 amino acids of CAPN6.

**Target**

CAPN6

**Preservatives**

CAPN6 Antibody is supplied in PBS containing 0.02% sodium azide.

**Form/Appearance**

Liquid

**Concentration**

1 mg/mL

**Storage**

CAPN6 antibody can be stored at 4°C for three months and -20°C, stable for up to one year. As with all antibodies care should be taken to avoid repeated freeze thaw cycles. Antibodies should not be exposed to prolonged high temperatures.

**Note**

For research use only

**Application notes**

CAPN6 antibody can be used for the detection of StrepII by Western blot at 0.5 - 1 µg/mL. Antibody can also be used for immunohistochemistry starting at 2.5 µg/mL. For immunofluorescence start at 20 µg/mL. Antibody validated: Western Blot in rat samples; Immunohistochemistry in human samples and Immunofluorescence in human samples. All other applications and species not yet tested.

**Isotype**

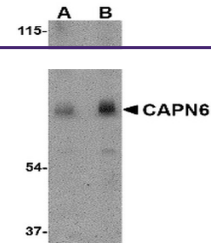
IgG

**Clonality**

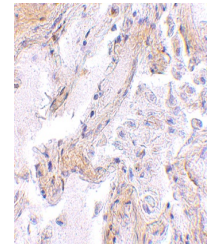
Polyclonal

**Uniprot ID**
[Q9Y6Q1](#)
**NCBI**
[NP\\_055104](#)
**Dilution Range**

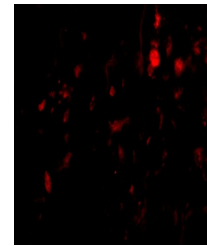
CAPN6 antibody can be used for the detection of StrepII by Western blot at 0.5 - 1 µg/mL. Antibody can also be used for immunohistochemistry starting at 2.5 µg/mL. For immunofluorescence start at 20 µg/mL. Antibody validated: Western Blot in rat samples; Immunohistochemistry in human samples



Western blot analysis of CAPN6 in rat lu...



Immunohistochemistry of CAPN6 in human l...



Immunofluorescence of CAPN6 in Human Lun...