

---

## Product Datasheet

### CARD10 Antibody (orb1240064)

**Description**

CARD10 Antibody

**Species/Host**

Rabbit

**Reactivity**

Human, Mouse

**Conjugation**

Unconjugated

**Tested Applications**

ELISA, ICC, IF, WB

**Immunogen**

CARD10 antibody was raised against a synthetic peptide corresponding to 14 amino acids at the C-terminus of human CARD10. The immunogen is located within the last 50 amino acids of CARD10.

**Target**

CARD10

**Preservatives**

CARD10 Antibody is supplied in PBS containing 0.02% sodium azide.

**Form/Appearance**

Liquid

**Concentration**

1 mg/mL

**Storage**

CARD10 antibody can be stored at 4°C for three months and -20°C, stable for up to one year. As with all antibodies care should be taken to avoid repeated freeze thaw cycles. Antibodies should not be exposed to prolonged high temperatures.

**Note**

For research use only

**Application notes**

CARD10 antibody can be used for detection of CARD10 by Western blot at 5 µg/mL. Antibody can also be used for immunocytochemistry starting at 10 µg/mL. For immunofluorescence start at 20 µg/mL. Antibody validated: Western Blot in mouse samples; Immunocytochemistry in mouse samples and Immunofluorescence in mouse samples. All other applications and species not yet tested.

**Isotype**

IgG

**Clonality**

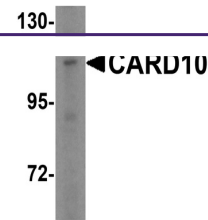
Polyclonal

**MW**

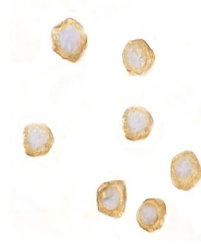
Predicted: 116 kDa Observed: 115 kDa

**Uniprot ID**
[Q9BWT7](#)
**NCBI**
[AAK26165](#)
**Dilution Range**

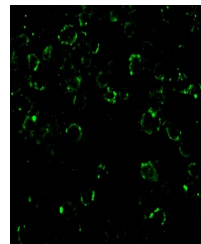
CARD10 antibody can be used for detection of CARD10 by Western blot at 5 µg/mL. Antibody can also be used for immunocytochemistry starting at 10 µg/mL. For immunofluorescence start at 20 µg/mL. Antibody validated: Western Blot in mouse



Western blot analysis of CARD10 in A-20 ...



Immunocytochemistry of CARD10 in EL4 cel...



Immunofluorescence of CARD10 in EL4 cell...