

Product Datasheet

CARD8 Antibody (orb1240063)

Description

CARD8 Antibody

Species/Host

Rabbit

Reactivity

Human

Conjugation

Unconjugated

Tested

ELISA, ICC, IF, WB

Applications

Immunogen

CARD8 antibody was raised against a synthetic peptide corresponding to amino acids at the C-terminus of human CARD8. The immunogen is located within the last 50 amino acids of CARD8.

Target

CARD8

Preservatives

CARD8 Antibody is supplied in PBS containing 0.02% sodium azide.

Form/Appearance

Liquid

Concentration

1 mg/mL

Storage

Store at 4°C for up to one year. Do not expose to prolonged high temperatures

Note

For research use only

Application notes

CARD8 antibody can be used for detection of CARD8 by Western blot at 1 -2 µg/mL. An approximate 45 kDa can be detected. Antibody can also be used for immunocytochemistry starting at 10 µg/mL. For immunofluorescence start at 20 µg/mL. Antibody validated: Western Blot in human samples; Immunocytochemistry in human samples and Immunofluorescence in human samples. All other applications and species not yet tested.

Isotype

IgG

Clonality

Polyclonal

MW

Predicted: 47 kDa Observed: 47 kDa

Uniprot ID

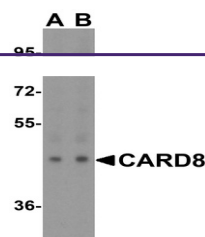
Q9Y2G2

NCBI

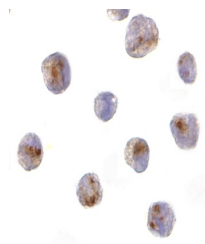
AAG50014

Dilution Range

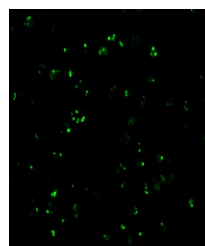
CARD8 antibody can be used for detection of CARD8 by Western blot at 1 -2 µg/mL. An approximate 45 kDa can be detected. Antibody can also be used for immunocytochemistry starting at 10 µg/mL. For immunofluorescence start at 20 µg/mL. Antibody validated: Western Blot in human samples; Immunocytochemistry in human samples and



Western blot analysis of CARD8 expressio...



Immunocytochemistry of CARD8 in K562 cel...



Immunofluorescence of CARD8 in K562 cell...