

Product Datasheet

CARD9 Antibody (orb1240062)

Description

CARD9 Antibody

Species/Host

Rabbit

Conjugation

Unconjugated

Tested

ELISA, ICC, WB

Applications
Immunogen

CARD9 antibody was raised against a 16 amino acid peptide near the carboxy terminus of human CARD9. The immunogen is located within the last 50 amino acids of CARD9.

Target

CARD9

Preservatives

CARD9 Antibody is supplied in PBS containing 0.02% sodium azide.

Form/Appearance

Liquid

Concentration

1 mg/ml

Storage

CARD9 antibody can be stored at 4°C for three months and -20°C, stable for up to one year. As with all antibodies care should be taken to avoid repeated freeze thaw cycles. Antibodies should not be exposed to prolonged high temperatures.

Note

For research use only

Application notes

CARD9 antibody can be used for detection of CARD9 by Western blot at 2.5 µg/mL. A band at approximately 59 kDa can be detected. Antibody can also be used for immunocytochemistry starting at 10 µg/mL. Antibody validated: Western Blot in human samples and Immunocytochemistry in human samples. All other applications and species not yet tested.

Isotype

IgG

Clonality

Polyclonal

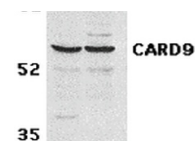
MW

59 kDa

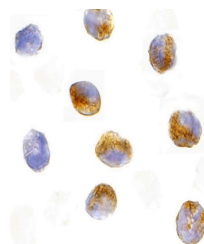
Uniprot ID
Q9H257
NCBI
AF311287
Dilution Range

CARD9 antibody can be used for detection of CARD9 by Western blot at 2.5 µg/mL. A band at approximately 59 kDa can be detected. Antibody can also be used for immunocytochemistry starting at 10 µg/mL. Antibody validated: Western Blot in human samples and Immunocytochemistry in human

116 A B



Western blot analysis of CARD9 expression...



Immunocytochemistry of CARD9 in K562 cells...