
Product Datasheet

CARM1 Antibody (orb1240061)

Description

CARM1 Antibody

Species/Host

Rabbit

Reactivity

Human, Mouse, Rat

Conjugation

Unconjugated

Tested Applications

ELISA, IF, WB

Immunogen

Rabbit polyclonal CARM1 antibody was raised against a 19 amino acid peptide near the amino terminus of human CARM1. The immunogen is located within amino acids 470 - 520 of CARM1.

Target

CARM1

Preservatives

CARM1 Antibody is supplied in PBS containing 0.02% sodium azide.

Form/Appearance

Liquid

Concentration

1 mg/mL

Storage

CARM1 antibody can be stored at 4°C for three months and -20°C, stable for up to one year.

Note

For research use only

Application notes

CARM1 antibody can be used for detection of CARM1 by Western blot at 1 - 2 µg/mL. Antibody validated: Western Blot in human samples and Immunofluorescence in human samples. All other applications and species not yet tested.

Isotype

IgG

Clonality

Polyclonal

MW

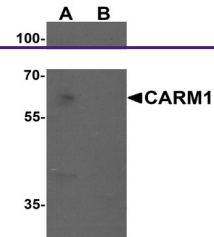
Predicted: 67 kDa

Uniprot ID
[Q86X55](https://www.uniprot.org/uniprot/Q86X55)
NCBI
[NP_954592](https://www.ncbi.nlm.nih.gov/nuccore/NP_954592)
Dilution Range

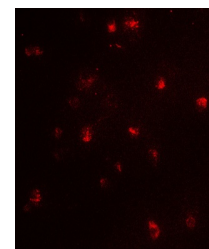
CARM1 antibody can be used for detection of CARM1 by Western blot at 1 - 2 µg/mL. Antibody validated: Western Blot in human samples and Immunofluorescence in human samples. All other applications and species not yet tested.

Expiration Date

12 months from date of receipt.



Western blot analysis of CARM1 in Jurkat...



Immunofluorescence of CARM1 in Jurkat ce...