

## Product Datasheet

### CARD11 Antibody (orb1240060)

**Description**

CARD11 Antibody

**Species/Host**

Rabbit

**Reactivity**

Human, Mouse

**Conjugation**

Unconjugated

**Tested**

ELISA, IF, IHC-P, WB

**Applications**
**Immunogen**

CARMA1 antibody was raised against a synthetic peptide corresponding to amino acids at the C-terminus of human CARMA1. The immunogen is located within the last 50 amino acids of CARMA1.

**Target**

CARD11

**Preservatives**

CARMA1 Antibody is supplied in PBS containing 0.02% sodium azide.

**Form/Appearance**

Liquid

**Concentration**

1 mg/mL

**Storage**

CARMA1 antibody can be stored at 4°C for three months and -20°C, stable for up to one year. As with all antibodies care should be taken to avoid repeated freeze thaw cycles. Antibodies should not be exposed to prolonged high temperatures.

**Note**

For research use only

**Application notes**

CARMA1 antibody can be used for detection of CARMA1 by Western blot at 0.5 to 2 µg/mL. A band at approximately 125 kDa can be detected. Antibody can also be used for immunohistochemistry starting at 10 µg/mL. For immunofluorescence start at 20 µg/mL. Antibody validated: Western Blot in mouse samples; Immunohistochemistry in mouse samples and Immunofluorescence in mouse samples. All other applications and species not yet tested.

**Isotype**

IgG

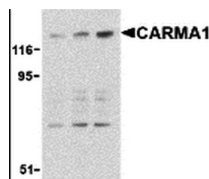
**Clonality**

Polyclonal

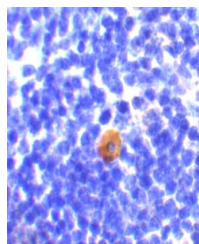
**Uniprot ID**
**Q9BXL7**
**NCBI**
**Q9BXL7**
**Dilution Range**

CARMA1 antibody can be used for detection of CARMA1 by Western blot at 0.5 to 2 µg/mL. A band at approximately 125 kDa can be detected. Antibody can also be used for immunohistochemistry starting at 10 µg/mL. For immunofluorescence start at 20

A B C

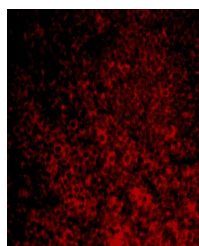


Western blot analysis of CARMA1 expressi...



Immunohistochemistry of CARMA1 in mouse

...



Immunofluorescence of CARMA1 in Mouse Sp...