
Product Datasheet

CASP4 Antibody (orb1240052)

Description

CASP4 Antibody

Species/Host

Rabbit

Reactivity

Human, Mouse, Rat

Conjugation

Unconjugated

Tested

ELISA, IHC-P, WB

Applications
Immunogen

Caspase-13 antibody was raised against a 15 amino acid peptide near the amino terminus of bovine Caspase-13. The immunogen is located within amino acids 80 - 130 of Caspase-13.

Target

CASP4

Preservatives

Caspase-13 Antibody is supplied in PBS containing 0.02% sodium azide.

Form/Appearance

Liquid

Concentration

1 mg/ml

Storage

Caspase-13 antibody can be stored at 4°C for three months and -20°C, stable for up to one year. As with all antibodies care should be taken to avoid repeated freeze thaw cycles. Antibodies should not be exposed to prolonged high temperatures.

Note

For research use only

Application notes

Caspase-13 antibody can be used for detection of caspase-13 by Western blot at 1 µg/mL. A 43 kDa band should be detected. Antibody can also be used for immunohistochemistry starting at 10 µg/mL. Antibody validated: Western Blot in human, mouse, and rat samples and Immunohistochemistry in mouse samples. All other applications and species not yet tested.

Isotype

IgG

Clonality

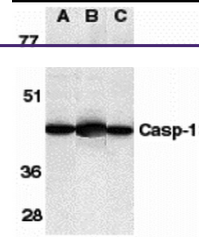
Polyclonal

MW

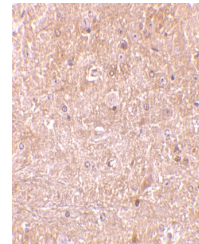
43 kDa

Uniprot ID
[O75601](#)
NCBI
[O75601](#)
Dilution Range

Caspase-13 antibody can be used for detection of caspase-13 by Western blot at 1 µg/mL. A 43 kDa band should be detected. Antibody can also be used for immunohistochemistry starting at 10 µg/mL. Antibody validated: Western Blot in human, mouse



Western blot analysis of caspase-13 in h...



Immunohistochemistry of caspase-13 in mo...