
Product Datasheet

Casp14 Antibody (orb1240051)

Description

Casp14 Antibody

Species/Host

Rabbit

Reactivity

Human, Mouse, Rat

Conjugation

Unconjugated

Tested

ELISA, IHC-P, WB

Applications
Immunogen

Caspase-14 antibody was raised against a 16 amino acid synthetic peptide from near the carboxy terminus of human caspase-14. The immunogen is located within the last 50 amino acids of Caspase-14.

Target

Casp14

Preservatives

Caspase-14 Antibody is supplied in PBS containing 0.02% sodium azide.

Form/Appearance

Liquid

Concentration

1 mg/mL

Storage

Caspase-14 antibody can be stored at 4°C for three months and -20°C, stable for up to one year. As with all antibodies care should be taken to avoid repeated freeze thaw cycles. Antibodies should not be exposed to prolonged high temperatures.

Note

For research use only

Application notes

Caspase-14 antibody can be used for the detection of caspase-14 by Western blot at 1 µg/mL. Antibody can also be used for immunohistochemistry starting at 2.5 µg/mL. Antibody validated: Western Blot in human samples and Immunohistochemistry in human samples. All other applications and species not yet tested.

Isotype

IgG

Clonality

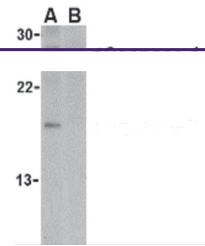
Polyclonal

MW

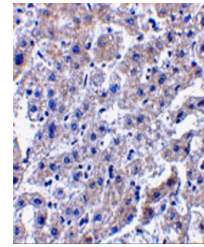
Predicted: 28 kDa Observed: 27 kDa

Uniprot ID
[P31944](#)
NCBI
[ACA63845](#)
Dilution Range

Caspase-14 antibody can be used for the detection of caspase-14 by Western blot at 1 µg/mL. Antibody can also be used for immunohistochemistry starting at 2.5 µg/mL. Antibody validated: Western Blot in human samples and Immunohistochemistry in



Western blot analysis of caspase-14 in J...



Immunohistochemistry of caspase-14 in hu...