
Product Datasheet

CASP4 Antibody (orb1240046)

Description

CASP4 Antibody

Species/Host

Rabbit

Reactivity

Human

Conjugation

Unconjugated

Tested Applications

ELISA, IF, IHC-P, WB

Immunogen

Caspase-4 antibody was raised against a 15 amino acid synthetic peptide from near the center of human Caspase-4. The immunogen is located within amino acids 100 - 150 of Caspase-4.

Target

CASP4

Preservatives

Caspase-4 Antibody is supplied in PBS containing 0.02% sodium azide.

Form/Appearance

Liquid

Concentration

1 mg/mL

Storage

Caspase-4 antibody can be stored at 4°C for three months and -20°C, stable for up to one year. As with all antibodies care should be taken to avoid repeated freeze thaw cycles. Antibodies should not be exposed to prolonged high temperatures.

Note

For research use only

Application notes

Casp-4 antibody can be used for the detection of Caspase-4 by Western blot at 1 and 2 µg/mL. Antibody can also be used for immunohistochemistry starting at 2 µg/mL. For immunofluorescence start at 10 µg/mL. Antibody validated: Western Blot in human samples; Immunohistochemistry in human samples and Immunofluorescence in mouse samples. All other applications and species not yet tested.

Isotype

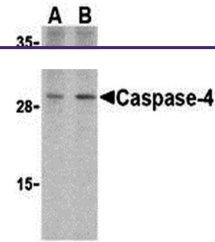
IgG

Clonality

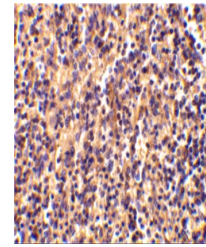
Polyclonal

Uniprot ID
[P49662](#)
NCBI
[AAA86890](#)
Dilution Range

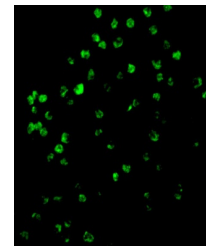
Casp-4 antibody can be used for the detection of Caspase-4 by Western blot at 1 and 2 µg/mL. Antibody can also be used for immunohistochemistry starting at 2 µg/mL. For immunofluorescence start at 10 µg/mL. Antibody validated: Western Blot in human samples; Immunohistochemistry in human samples



Western blot analysis of caspase-4 in hu...



Immunohistochemical staining of human sp...



Immunofluorescence of Caspase-4 in A20 C...