
Product Datasheet

CASP5 Antibody (orb1240045)

Description

CASP5 Antibody

Species/Host

Rabbit

Reactivity

Human, Mouse

Conjugation

Unconjugated

Tested Applications

ELISA, ICC, IF, WB

Immunogen

Caspase-5 antibody was raised against a 14 amino acid synthetic peptide from the center of human Caspase-5. The immunogen is located within amino acids 170 - 220 of Caspase-5.

Target

CASP5

Preservatives

Caspase-5 Antibody is supplied in PBS containing 0.02% sodium azide.

Form/Appearance

Liquid

Concentration

1 mg/mL

Storage

Caspase-5 antibody can be stored at 4°C for three months and -20°C, stable for up to one year. As with all antibodies care should be taken to avoid repeated freeze thaw cycles. Antibodies should not be exposed to prolonged high temperatures.

Note

For research use only

Application notes

Casp-5 antibody can be used for the detection of caspase-5 by Western blot at 0.5 - 2 µg/mL. Antibody can also be used for immunocytochemistry starting at 2 µg/mL. For immunofluorescence start at 2 µg/mL. Antibody validated: Western Blot in human samples; Immunocytochemistry in mouse samples and Immunofluorescence in mouse samples. All other applications and species not yet tested.

Isotype

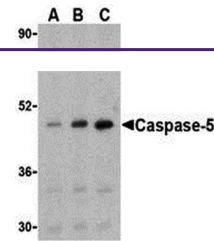
IgG

Clonality

Polyclonal

Uniprot ID
P51878
NCBI
P51878
Dilution Range

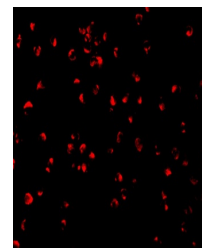
Casp-5 antibody can be used for the detection of caspase-5 by Western blot at 0.5 - 2 µg/mL. Antibody can also be used for immunocytochemistry starting at 2 µg/mL. For immunofluorescence start at 2 µg/mL. Antibody validated: Western Blot in human samples; Immunocytochemistry in mouse samples



Western blot analysis of caspase-5 in Ra...



Immunocytochemistry of caspase-5 in P815...



Immunofluorescence of Caspase-5 in P815

...