

---

## Product Datasheet

### STIM1 Antibody (orb1240038)

**Description**

STIM1 Antibody

**Species/Host**

Rabbit

**Reactivity**

Human, Mouse, Rat

**Conjugation**

Unconjugated

**Tested Applications**

ELISA, IF, IHC-P, WB

**Immunogen**

STIM1 antibody was raised against a 24 amino acid synthetic peptide from near the carboxy terminus of human STIM1. The immunogen is located within the last 50 amino acids of STIM1.

**Target**

STIM1

**Preservatives**

STIM1 Antibody is supplied in PBS containing 0.02% sodium azide.

**Form/Appearance**

Liquid

**Concentration**

1 mg/mL

**Storage**

STIM1 antibody can be stored at 4°C for three months and -20°C, stable for up to one year. As with all antibodies care should be taken to avoid repeated freeze thaw cycles. Antibodies should not be exposed to prolonged high temperatures.

**Note**

For research use only

**Application notes**

STIM1 antibody can be used for detection of STIM1 by Western blot at 1 - 2 µg/mL. Antibody can also be used for immunohistochemistry starting at 2.5 µg/mL. Antibody validated: Western Blot in mouse samples; Immunohistochemistry in human and mouse samples and Immunofluorescence in human and mouse samples. All other applications and species not yet tested.

**Isotype**

IgG

**Clonality**

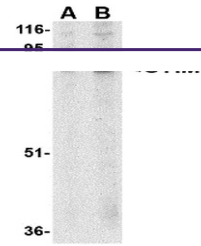
Polyclonal

**MW**

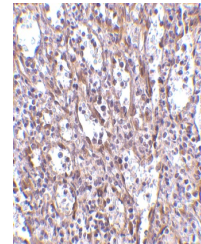
Predicted: 59, 75, 87 kDa Observed: 88 kDa

**Uniprot ID**
[Q13586](#)
**NCBI**
[NP\\_003147](#)
**Dilution Range**

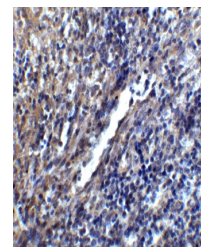
STIM1 antibody can be used for detection of STIM1 by Western blot at 1 - 2 µg/mL. Antibody can also be used for immunohistochemistry starting at 2.5 µg/mL. Antibody validated: Western Blot in mouse samples; Immunohistochemistry in human and



Western blot analysis of STIM1 in mouse ...



Immunohistochemistry of STIM1 in human s...



Immunohistochemistry of STIM1 in mouse s...