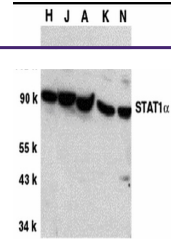
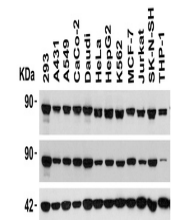

Product Datasheet

STAT1 Antibody (orb1240037)

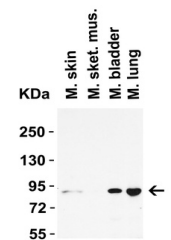
Description	STAT1 Antibody
Species/Host	Rabbit
Conjugation	Unconjugated
Tested Applications	ELISA, ICC, IF, IHC-P, IP, WB
Immunogen	Anti-STAT1 alpha antibody (orb1240037) was raised against a peptide corresponding to 38 amino acids near the carboxy terminus of human STAT1 alpha. The immunogen is located within the last 50 amino acids of STAT1 alpha.
Target	STAT1
Preservatives	STAT1 alpha Antibody is supplied in PBS containing 0.02% sodium azide.
Form/Appearance	Liquid
Concentration	1 mg/ml
Storage	STAT1 alpha antibody can be stored at 4°C for three months and -20°C, stable for up to one year. As with all antibodies care should be taken to avoid repeated freeze thaw cycles. Antibodies should not be exposed to prolonged high temperatures.
Note	For research use only
Isotype	IgG
Clonality	Polyclonal
MW	Predicted: 87kD Observed: 87 kD
Uniprot ID	P42224
NCBI	NP_009330
Dilution Range	WB: 0.5-1 µg/mL; IF: 20 µg/mL; IHC: 2.5 µg/mL; ICC: 10 µg/mL .Antibody validated: Western Blot in human, mouse and rat samples; Immunofluorescence, Immunohistochemistry and Immunocytochemistry in human samples. All other applications and species not yet tested.
Expiration Date	12 months from date of receipt.



Western Blot Validation in Human and Mou...



Independent Antibody Validation (IAV) vi...



Western Blot Validation in Mouse tissues...