
Product Datasheet

CCDC47 Antibody (orb1240027)

Description

CCDC47 Antibody

Species/Host

Rabbit

Reactivity

Human, Mouse, Rat

Conjugation

Unconjugated

Tested Applications

ELISA, IF, IHC-P, WB

Immunogen

CCDC47 antibody was raised against a 15 amino acid synthetic peptide from near the carboxy terminus of human CCDC47. The immunogen is located within the last 50 amino acids of CCDC47.

Target

CCDC47

Preservatives

CCDC47 Antibody is supplied in PBS containing 0.02% sodium azide.

Form/Appearance

Liquid

Concentration

1 mg/mL

Storage

CCDC47 antibody can be stored at 4°C for three months and -20°C, stable for up to one year. As with all antibodies care should be taken to avoid repeated freeze thaw cycles. Antibodies should not be exposed to prolonged high temperatures.

Note

For research use only

Application notes

CCDC47 antibody can be used for detection of CCDC47 by Western blot at 1 - 2 µg/mL. Antibody can also be used for immunohistochemistry starting at 5 µg/mL. For immunofluorescence start at 20 µg/mL. Antibody validated: Western Blot in mouse samples; Immunohistochemistry in mouse samples and Immunofluorescence in mouse samples. All other applications and species not yet tested.

Isotype

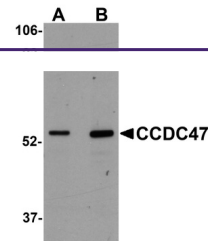
IgG

Clonality

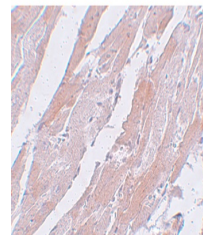
Polyclonal

Uniprot ID
[Q96A33](#)
NCBI
[EAW94279](#)
Dilution Range

CCDC47 antibody can be used for detection of CCDC47 by Western blot at 1 - 2 µg/mL. Antibody can also be used for immunohistochemistry starting at 5 µg/mL. For immunofluorescence start at 20 µg/mL. Antibody validated: Western Blot in mouse samples; Immunohistochemistry in mouse samples

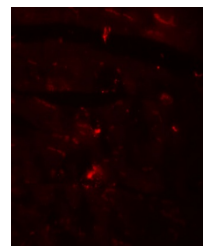


Western blot analysis of CCDC47 in mouse...



Immunohistochemistry of CCDC47 in mouse

...



Immunofluorescence of CDCC47 in mouse he...