
Product Datasheet

FAM175A Antibody (orb1240023)

Description

FAM175A Antibody

Species/Host

Rabbit

Reactivity

Human, Mouse

Conjugation

Unconjugated

Tested Applications

ELISA, IHC-P, WB

Immunogen

CCDC98 antibody was raised against a 15 amino acid synthetic peptide from near the amino terminus of human CCDC98. The immunogen is located within amino acids 80 - 130 of CCDC98.

Target

FAM175A

Preservatives

CCDC98 Antibody is supplied in PBS containing 0.02% sodium azide.

Form/Appearance

Liquid

Concentration

1 mg/mL

Storage

CCDC98 antibody can be stored at 4°C for three months and -20°C, stable for up to one year. As with all antibodies care should be taken to avoid repeated freeze thaw cycles. Antibodies should not be exposed to prolonged high temperatures.

Note

For research use only

Application notes

CCDC98 antibody can be used for detection of CCDC98 by Western blot at 1 µg/mL. Antibody can also be used for immunohistochemistry starting at 5 µg/mL. Antibody validated: Western Blot in human samples and Immunohistochemistry in human samples. All other applications and species not yet tested.

Isotype

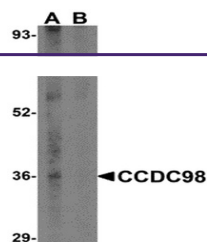
IgG

Clonality

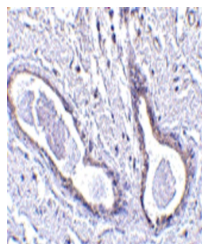
Polyclonal

Uniprot ID
[Q6UWZ7](#)
NCBI
[NP_620775](#)
Dilution Range

CCDC98 antibody can be used for detection of CCDC98 by Western blot at 1 µg/mL. Antibody can also be used for immunohistochemistry starting at 5 µg/mL. Antibody validated: Western Blot in human samples and Immunohistochemistry in human samples. All other applications and species not yet tested.



Western blot analysis of CCDC98 in human...



Immunohistochemistry of CCDC98 in human

...