
Product Datasheet

CCL4 Antibody (orb1240020)

Description

CCL4 Antibody

Species/Host

Rabbit

Reactivity

Human, Mouse, Rat

Conjugation

Unconjugated

Tested Applications

ELISA, IF, IHC-P, WB

Immunogen

Rabbit polyclonal CCL4 antibody was raised against a 15 amino acid peptide near the center of human CCL4. The immunogen is located within the first 50 amino acids of CCL4.

Target

CCL4

Preservatives

CCL4 Antibody is supplied in PBS containing 0.02% sodium azide.

Form/Appearance

Liquid

Concentration

1 mg/mL

Storage

CCL4 antibody can be stored at 4°C for three months and -20°C, stable for up to one year.

Note

For research use only

Application notes

CCL4 antibody can be used for detection of CCL4 by Western blot at 1 - 2 µg/mL. Antibody validated: Western Blot in rat samples; Immunohistochemistry in rat samples and Immunofluorescence in rat samples. All other applications and species not yet tested.

Isotype

IgG

Clonality

Polyclonal

MW

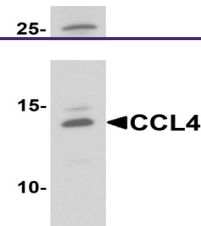
Predicted: 10 kDa

Uniprot ID
[P13236](#)
NCBI
[NP_002975](#)
Dilution Range

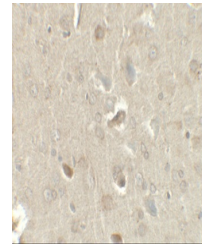
CCL4 antibody can be used for detection of CCL4 by Western blot at 1 - 2 µg/mL. Antibody validated: Western Blot in rat samples; Immunohistochemistry in rat samples and Immunofluorescence in rat samples. All other applications and species not yet tested.

Expiration Date

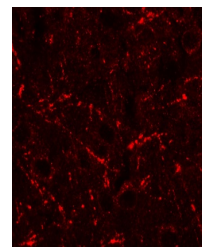
12 months from date of receipt.



Western blot analysis of CCL4 in rat bra...



Immunohistochemistry of CCL4 in rat brai...



Immunofluorescence of CCL4 in rat brain ...