
Product Datasheet

CCR3 Antibody (orb1240017)

Description

CCR3 Antibody

Species/Host

Rabbit

Reactivity

Human, Mouse, Rat

Conjugation

Unconjugated

Tested

ELISA, IF, IHC-P, WB

Applications
Immunogen

CCR3 antibody was raised against a 14 amino acid synthetic peptide from near the carboxy terminus of human CCR3. The immunogen is located within the last 50 amino acids of CCR3.

Target

CCR3

Preservatives

CCR3 Antibody is supplied in PBS containing 0.02% sodium azide.

Form/Appearance

Liquid

Concentration

1 mg/mL

Storage

CCR3 antibody can be stored at 4°C up to one year. Antibodies should not be exposed to prolonged high temperatures.

Note

For research use only

Application notes

CCR3 antibody can be used for the detection of CCR3 by Western blot at 1 - 2 µg/mL. Antibody can also be used for immunohistochemistry starting at 10 µg/mL. For immunofluorescence start at 20 µg/mL. Antibody validated: Western Blot in human samples; Immunohistochemistry in human samples and Immunofluorescence in human samples. All other applications and species not yet tested.

Isotype

IgG

Clonality

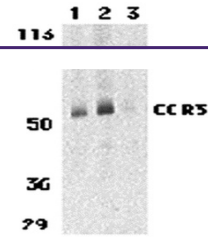
Polyclonal

MW

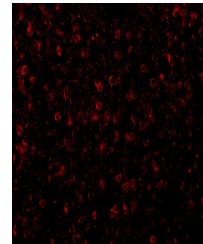
Predicted: 39, 41 kDa Observed: 52 kDa

Uniprot ID
[P51677](#)
NCBI
[NP_847899](#)
Dilution Range

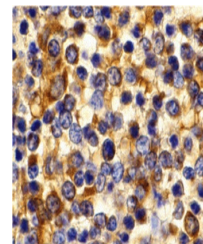
CCR3 antibody can be used for the detection of CCR3 by Western blot at 1 - 2 µg/mL. Antibody can also be used for immunohistochemistry starting at 10 µg/mL. For immunofluorescence start at 20 µg/mL. Antibody validated: Western Blot in human samples; Immunohistochemistry in human samples and Immunofluorescence in human samples. All other



Western blot analysis of CCR3 in human s...



Immunofluorescence of CCR3 in Human Sple...



Immunohistochemistry of CCR3 in human sp...