
Product Datasheet

CCR7 Antibody (orb1240015)

Description

CCR7 Antibody

Species/Host

Rabbit

Reactivity

Human

Conjugation

Unconjugated

Tested Applications

ELISA, IF, IHC-P, WB

Immunogen

CCR7 antibody was raised against a 15 amino acid peptide near the center of human CCR7. The immunogen is located within amino acids 180 - 230 of CCR7.

Target

CCR7

Preservatives

CCR7 antibody is supplied in PBS containing 0.02% sodium azide.

Form/Appearance

Liquid

Concentration

1 mg/mL

Storage

CCR7 antibody can be stored at 4°C for three months and -20°C, stable for up to one year.

Note

For research use only

Application notes

CCR7 antibody can be used for detection of CCR7 by Western blot at 1 - 2 µg/ml. Antibody can also be used for Immunohistochemistry starting at 5 µg/mL. For immunofluorescence start at 20 µg/mL. Antibody validated: Western Blot in human samples; Immunohistochemistry in human samples and Immunofluorescence in human samples. All other applications and species not yet tested.

Isotype

IgG

Clonality

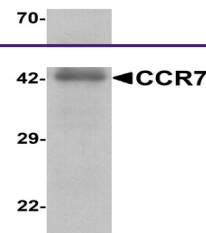
Polyclonal

MW

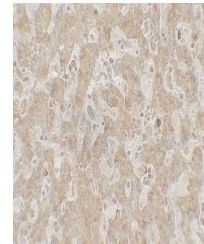
Predicted: 42 kDa Observed: 42 kDa

Uniprot ID
[P32248](#)
NCBI
[NP_001829](#)
Dilution Range

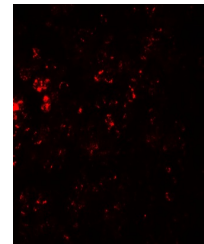
CCR7 antibody can be used for detection of CCR7 by Western blot at 1 - 2 µg/ml. Antibody can also be used for Immunohistochemistry starting at 5 µg/mL. For immunofluorescence start at 20 µg/mL. Antibody validated: Western Blot in human samples; Immunohistochemistry in human samples and Immunofluorescence in human samples. All other applications and species not yet tested.



Western blot analysis of CCR7 in human s...



Immunohistochemistry of CCR7 in human sp...



Immunofluorescence of CCR7 in human sple...