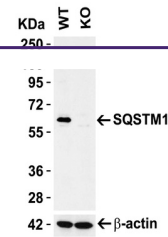


---

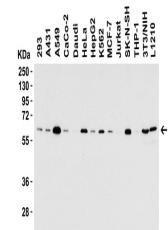
## Product Datasheet

### SQSTM1 Antibody (orb1240011)

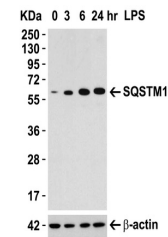
Description	SQSTM1 Antibody
<b>Species/Host</b>	Rabbit
<b>Reactivity</b>	Human, Mouse, Rat
<b>Conjugation</b>	Unconjugated
<b>Tested Applications</b>	ELISA, IF, IHC-P, WB
<b>Immunogen</b>	SQSTM1 antibody was raised against a 13 amino acid synthetic peptide from near the carboxy terminus of human SQSTM1. The immunogen is located within the last 50 amino acids of SQSTM1.
<b>Target</b>	SQSTM1
<b>Preservatives</b>	SQSTM1 Antibody is supplied in PBS containing 0.02% sodium azide.
<b>Form/Appearance</b>	Liquid
<b>Concentration</b>	1 mg/mL
<b>Storage</b>	SQSTM1 antibody can be stored at 4°C up to one year. Antibodies should not be exposed to prolonged high temperatures.
<b>Note</b>	For research use only
<b>Application notes</b>	WB: 0.5-2 µg/mL; IF: 20 µg/mL; IHC: 2-5 µg/mL;. Antibody validated: Western Blot in human and mouse samples; Immunofluorescence and Immunohistochemistry in human, mouse and rat samples. All other applications and species not yet tested.
<b>Isotype</b>	IgG
<b>Clonality</b>	Polyclonal
<b>MW</b>	Predicted: 48kD Observed: 65 kD
<b>Uniprot ID</b>	<a href="#">Q13501</a>
<b>NCBI</b>	<a href="#">Q13501</a>
<b>Dilution Range</b>	WB: 0.5-2 µg/mL; IF: 20 µg/mL; IHC: 2-5 µg/mL;. Antibody validated: Western Blot in human and mouse samples; Immunofluorescence and Immunohistochemistry in human, mouse and rat samples. All other applications and species not yet tested.
<b>Expiration Date</b>	12 months from date of receipt.



KO Validation in HEK293T Cells. Loading:...



Western Blot Validation in Cell Lines. L...



Induced Expression Validation in Mouse M...