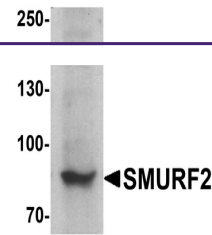
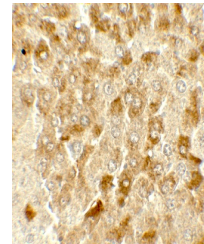

Product Datasheet

SMURF2 Antibody (orb1240007)

Description	SMURF2 Antibody
Species/Host	Rabbit
Reactivity	Human, Mouse, Rat
Conjugation	Unconjugated
Tested Applications	ELISA, IF, IHC-P, WB
Immunogen	SMURF2 antibody was raised against a 17 amino acid peptide near the amino terminus of human SMURF2. The immunogen is located within amino acids 140 - 190 of SMURF2.
Target	SMURF2
Preservatives	SMURF2 Antibody is supplied in PBS containing 0.02% sodium azide.
Form/Appearance	Liquid
Concentration	1 mg/mL
Storage	SMURF2 antibody can be stored at 4°C for three months and -20°C, stable for up to one year.
Note	For research use only
Application notes	SMURF2 antibody can be used for detection of SMURF2 by Western blot at 1 - 2 µg/ml. Antibody can also be used for Immunohistochemistry at 2 µg/mL. For Immunofluorescence start at 20 µg/mL. Antibody validated: Western Blot in mouse samples; Immunohistochemistry in human and mouse samples and Immunofluorescence in human and mouse samples. All other applications and species not yet tested.
Isotype	IgG
Clonality	Polyclonal
MW	Predicted: 82 kDa Observed: 85 kDa
Uniprot ID	Q9HAU4
NCBI	NP_073576
Dilution Range	SMURF2 antibody can be used for detection of SMURF2 by Western blot at 1 - 2 µg/ml. Antibody can also be used for Immunohistochemistry at 2 µg/mL. For Immunofluorescence start at 20 µg/mL. Antibody validated: Western Blot in mouse samples; Immunohistochemistry in human and mouse samples and Immunofluorescence in human and mouse samples.

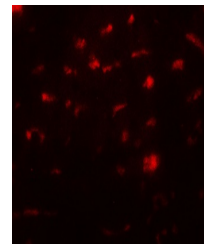


Western blot analysis of SMURF2 in C2C12...



Immunohistochemistry of SMURF2 in mouse

...



Immunofluorescence of SMURF2 in mouse li...