

## Product Datasheet

### SLITRK1 Antibody (orb1240003)

**Description**

SLITRK1 Antibody

**Species/Host**

Rabbit

**Reactivity**

Human, Mouse, Rat

**Conjugation**

Unconjugated

**Tested Applications**

ELISA, IF, IHC-P, WB

**Immunogen**

Slitrk1 antibody was raised against a 18 amino acid synthetic peptide from near the center of human Slitrk1. The immunogen is located within amino acids 270 - 320 of Slitrk1.

**Target**

SLITRK1

**Preservatives**

Slitrk1 Antibody is supplied in PBS containing 0.02% sodium azide.

**Form/Appearance**

Liquid

**Concentration**

1 mg/mL

**Storage**

Slitrk1 antibody can be stored at 4°C for three months and -20°C, stable for up to one year. As with all antibodies care should be taken to avoid repeated freeze thaw cycles. Antibodies should not be exposed to prolonged high temperatures.

**Note**

For research use only

**Application notes**

Slitrk1 antibody can be used for detection of Slitrk1 by Western blot at 1 - 2 µg/mL. Antibody can also be used for immunohistochemistry starting at 2.5 µg/mL. For immunofluorescence start at 20 µg/mL. Antibody validated: Western Blot in human samples; Immunohistochemistry in human and mouse samples and Immunofluorescence in human and mouse samples. All other applications and species not yet tested.

**Isotype**

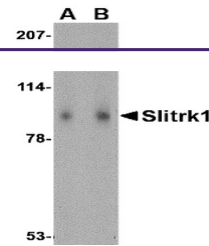
IgG

**Clonality**

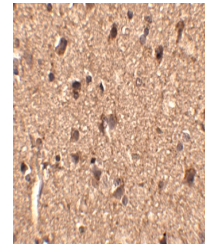
Polyclonal

**Uniprot ID**
[Q96PX8](#)
**NCBI**
[NP\\_443142](#)
**Dilution Range**

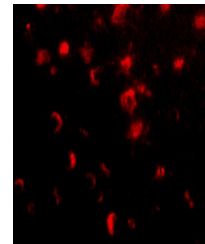
Slitrk1 antibody can be used for detection of Slitrk1 by Western blot at 1 - 2 µg/mL. Antibody can also be used for immunohistochemistry starting at 2.5 µg/mL. For immunofluorescence start at 20 µg/mL. Antibody validated: Western Blot in human



Western blot analysis of Slitrk1 in huma...



Immunohistochemistry of Slitrk1 in human...



Immunofluorescence of slitrk1 in human b...