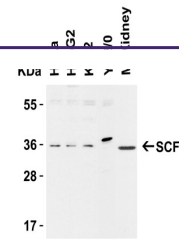


---

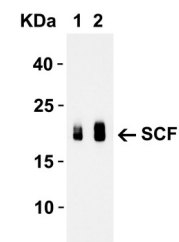
## Product Datasheet

### KITLG Antibody (orb1240002)

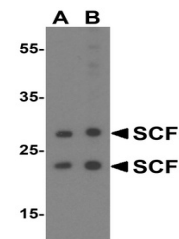
| Description                | KITLG Antibody  |
|----------------------------|---|
| <b>Species/Host</b>        | Rabbit  |
| <b>Reactivity</b>          | Human, Mouse, Rat   |
| <b>Conjugation</b>         | Unconjugated  |
| <b>Tested Applications</b> | ELISA, IF, IHC-P, WB  |
| <b>Immunogen</b>           | Anti-SCF antibody (orb1240002) was raised against a peptide corresponding to 18 amino acids near the center of human SCF. The immunogen is located within amino acids 100-150 of SCF.   |
| <b>Target</b>              | KITLG   |
| <b>Preservatives</b>       | SCF Antibody is supplied in PBS containing 0.02% sodium azide.  |
| <b>Form/Appearance</b>     | Liquid  |
| <b>Concentration</b>       | 1 mg/mL   |
| <b>Storage</b>             | SCF antibody can be stored at 4°C for three months and -20°C, stable for up to one year. As with all antibodies care should be taken to avoid repeated freeze thaw cycles. Antibodies should not be exposed to prolonged high temperatures.   |
| <b>Note</b>                | For research use only   |
| <b>Isotype</b>             | IgG   |
| <b>Clonality</b>           | Polyclonal  |
| <b>MW</b>                  | Predicted: 31kD<br>Observed: 36 kD (31kD + 4 N-linked Glycosylations)   |
| <b>Uniprot ID</b>          | <a href="#">P21583</a>  |
| <b>NCBI</b>                | <a href="#">P21583</a>  |
| <b>Dilution Range</b>      | WB: 1-2 µg/mL; IHC: 2.5 µg/mL; IF: 20 µg/mL. Antibody validated: Western Blot in human, mouse and rat samples; Immunohistochemistry in mouse samples; Immunofluorescence in human samples. All other applications and species not yet tested. |
| <b>Expiration Date</b>     | 12 months from date of receipt.   |



Western Blot Validation in Cell Lines an...



Western Blot Validation with Recombinant...



Western Blot Validation in Human HeLa Ce...