
Product Datasheet

CDCA8 Antibody (orb1240000)

Description

CDCA8 Antibody

Species/Host

Rabbit

Reactivity

Human, Mouse, Rat

Conjugation

Unconjugated

Tested Applications

ELISA, IF, WB

Immunogen

CDCA8 antibody was raised against a 19 amino acid synthetic peptide near the amino terminus of the human CDCA8. The immunogen is located within the first 50 amino acids of CDCA8.

Target

CDCA8

Preservatives

CDCA8 Antibody is supplied in PBS containing 0.02% sodium azide.

Form/Appearance

Liquid

Concentration

1 mg/mL

Storage

CDCA8 antibody can be stored at 4°C for three months and -20°C, stable for up to one year. As with all antibodies care should be taken to avoid repeated freeze thaw cycles. Antibodies should not be exposed to prolonged high temperatures.

Note

For research use only

Application notes

CDCA8 antibody can be used for detection of CDCA8 by Western blot at 1 and 2 µg/mL. Antibody can also be used for immunofluorescence starting at 20 µg/mL. For immunofluorescence start at 20 µg/mL. Antibody validated: Western Blot in rat samples and Immunofluorescence in rat samples. All other applications and species not yet tested.

Isotype

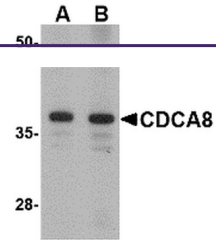
IgG

Clonality

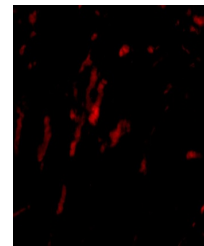
Polyclonal

Uniprot ID
[Q53HL2](#)
NCBI
[NP_060571](#)
Dilution Range

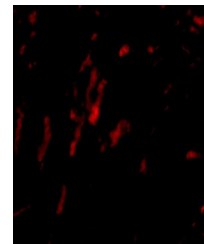
CDCA8 antibody can be used for detection of CDCA8 by Western blot at 1 and 2 µg/mL. Antibody can also be used for immunofluorescence starting at 20 µg/mL. For immunofluorescence start at 20 µg/mL. Antibody validated: Western Blot in rat samples and Immunofluorescence in rat samples. All other applications and species not yet tested.



Western blot analysis of CDCA8 in Rat ki...



Immunofluorescence of CDCA8 in rat kidney...



Immunofluorescence of CDCA8 in Rat Kidne...