

---

## Product Datasheet

### CDIP1 Antibody (orb1239998)

**Description**

CDIP1 Antibody

**Species/Host**

Rabbit

**Reactivity**

Human, Mouse

**Conjugation**

Unconjugated

**Tested**

ELISA, IF, IHC-P, WB

**Applications**
**Immunogen**

CDIP antibody was raised against a 19 amino acid synthetic peptide near the center of human CDIP. The immunogen is located within amino acids 70 - 120 of CDIP.

**Target**

CDIP1

**Preservatives**

CDIP Antibody is supplied in PBS containing 0.02% sodium azide.

**Form/Appearance**

Liquid

**Concentration**

1 mg/mL

**Storage**

CDIP antibody can be stored at 4°C for three months and -20°C, stable for up to one year. As with all antibodies care should be taken to avoid repeated freeze thaw cycles. Antibodies should not be exposed to prolonged high temperatures.

**Note**

For research use only

**Application notes**

CDIP antibody can be used for detection of CDIP by Western blot at 0.25 - 0.5 µg/mL. Antibody can also be used for immunohistochemistry starting at 2.5 µg/mL. For immunofluorescence start at 20 µg/mL. Antibody validated: Western Blot in human samples; Immunohistochemistry in mouse samples and Immunofluorescence in mouse samples. All other applications and species not yet tested.

**Isotype**

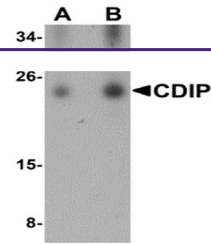
IgG

**Clonality**

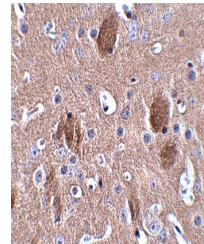
Polyclonal

**Uniprot ID**
[Q9H305](#)
**NCBI**
[NP\\_037531](#)
**Dilution Range**

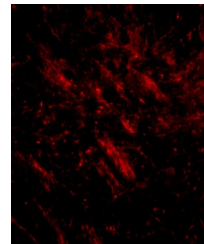
CDIP antibody can be used for detection of CDIP by Western blot at 0.25 - 0.5 µg/mL. Antibody can also be used for immunohistochemistry starting at 2.5 µg/mL. For immunofluorescence start at 20 µg/mL. Antibody validated: Western Blot in human samples; Immunohistochemistry in mouse samples



Western blot analysis of CDIP in human brain tissue.



Immunohistochemistry of CDIP in mouse brain tissue.



Immunofluorescence of CDIP1 in mouse brain tissue.