

---

## Product Datasheet

### SARS-CoV-2 (COVID-19) Spike RBD Antibody (orb1239994)

**Description**

SARS-CoV-2 (COVID-19) Spike RBD Antibody

**Species/Host**

Rabbit

**Reactivity**

Virus

**Conjugation**

Unconjugated

**Tested Applications**

ELISA, IF, IHC, WB

**Immunogen**

Anti-SARS-CoV-2 (COVID-19) Spike RBD antibody (orb1239994) was raised against a peptide corresponding to 19 amino acids near the carboxy terminus of SARS-CoV-2 (COVID-19) Spike glycoprotein RBD. The immunogen is located within the last 50 amino acids of SARS-CoV-2 (COVID-19) Spike protein RBD.

**Target**

S

**Preservatives**

SARS-CoV-2 (COVID-19) Spike RBD antibody is supplied in PBS containing 0.02% sodium azide.

**Form/Appearance**

Liquid

**Concentration**

1 mg/mL

**Storage**

SARS-CoV-2 (COVID-19) Spike RBD antibody can be stored at 4°C up to one year. Antibodies should not be exposed to prolonged high temperatures.

**Note**

For research use only

**Isotype**

IgG

**Clonality**

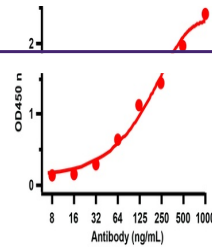
Polyclonal

**Uniprot ID**
[P0DTC2](#)
**NCBI**
[QHD43416](#)
**Dilution Range**

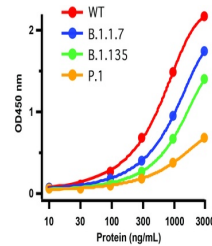
WB: 2-5 µg/mL; IF: 20 µg/mL; IHC: 0.5 µg/mL. Antibody validated: Western Blot in human samples; Immunohistochemistry and Immunofluorescence in human samples. SARS-CoV-2 (COVID-19) Spike RBD Antibody can be used for the detection of SARS-CoV-2 (COVID-19) Spike protein in ELISA and WB. It will detect 4 ng of free peptide at 1 µg/mL. All other applications and species not yet tested.

**Expiration Date**

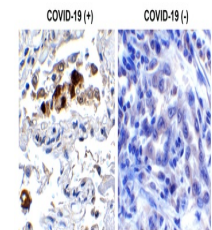
12 months from date of receipt.



ELISA Validation with SARS-CoV-2 (COVID-19) Spike RBD Antibody



Detection of SARS-CoV-2 Variant Proteins...



Immunohistochemistry Validation of SARS-CoV-2