
Product Datasheet

CDX2 Antibody (orb1239992)

Description

CDX2 Antibody

Species/Host

Rabbit

Reactivity

Human, Mouse, Rat

Conjugation

Unconjugated

Tested Applications

ELISA, IF, IHC-P, WB

Immunogen

CDX2 antibody was raised against a 16 amino acid synthetic peptide near the carboxy terminus of human CDX2. The immunogen is located within amino acids 220 - 270 of CDX2.

Target

CDX2

Preservatives

CDX2 Antibody is supplied in PBS containing 0.02% sodium azide.

Form/Appearance

Liquid

Concentration

1 mg/mL

Storage

CDX2 antibody can be stored at 4°C for three months and -20°C, stable for up to one year. As with all antibodies care should be taken to avoid repeated freeze thaw cycles. Antibodies should not be exposed to prolonged high temperatures.

Note

For research use only

Application notes

CDX2 antibody can be used for detection of CDX2 by Western blot at 1 µg/mL. Antibody can also be used for immunohistochemistry starting at 5 µg/mL. For immunofluorescence start at 20 µg/mL. Antibody validated: Western Blot in mouse samples; Immunohistochemistry in rat samples and Immunofluorescence in rat samples. All other applications and species not yet tested.

Isotype

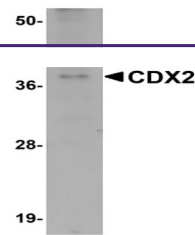
IgG

Clonality

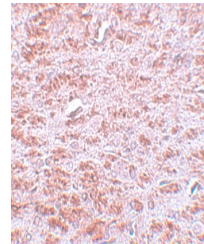
Polyclonal

Uniprot ID
[Q99626](#)
NCBI
[CAA74038](#)
Dilution Range

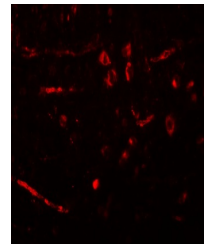
CDX2 antibody can be used for detection of CDX2 by Western blot at 1 µg/mL. Antibody can also be used for immunohistochemistry starting at 5 µg/mL. For immunofluorescence start at 20 µg/mL. Antibody validated: Western Blot in mouse samples; Immunohistochemistry in rat samples and



Western blot analysis of CDX2 in mouse b...



Immunohistochemistry of CDX2 in rat brai...



Immunofluorescence of CDX2 in rat brain ...