
Product Datasheet

CEBPD Antibody (orb1239990)

Description

CEBPD Antibody

Species/Host

Rabbit

Reactivity

Human, Mouse, Rat

Conjugation

Unconjugated

Tested Applications

ELISA, IF, WB

Immunogen

Rabbit polyclonal CEBPD antibody was raised against an 18 amino acid peptide near the carboxy terminus of human CEBPD. The immunogen is located within amino acids 170 - 220 of CEBPD.

Target

CEBPD

Preservatives

CEBPD Antibody is supplied in PBS containing 0.02% sodium azide.

Form/Appearance

Liquid

Concentration

1 mg/mL

Storage

CEBPD antibody can be stored at 4°C for three months and -20°C, stable for up to one year. As with all antibodies care should be taken to avoid repeated freeze thaw cycles. Antibodies should not be exposed to prolonged high temperatures.

Note

For research use only

Application notes

CEBPD antibody can be used for detection of CEBPD by Western blot at 0.5 - 1 µg/mL. For immunofluorescence start at 20 µg/mL. Antibody validated: Western Blot in rat samples and Immunofluorescence in human samples. All other applications and species not yet tested.

Isotype

IgG

Clonality

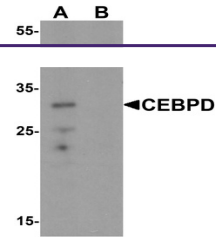
Polyclonal

MW

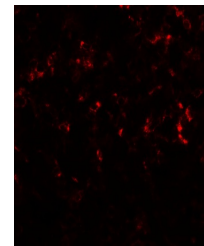
30 kDa

Uniprot ID
[P49716](#)
NCBI
[NP_005186](#)
Dilution Range

CEBPD antibody can be used for detection of CEBPD by Western blot at 0.5 - 1 µg/mL. For immunofluorescence start at 20 µg/mL. Antibody validated: Western Blot in rat samples and Immunofluorescence in human samples. All other applications and species not yet tested.



Western blot analysis of CEBPD in rat sp...



Immunofluorescence of CEBPD in human spl...