

---

## Product Datasheet

### CHORDC1 Antibody (orb1239984)

**Description**

CHORDC1 Antibody

**Species/Host**

Rabbit

**Reactivity**

Human, Mouse, Rat

**Conjugation**

Unconjugated

**Tested Applications**

ELISA, ICC, IF, WB

**Immunogen**

CHORDC1 antibody was raised against a 21 amino acid synthetic peptide near the amino terminus of human CHORDC1. The immunogen is located within amino acids 50 - 100 of CHORDC1.

**Target**

CHORDC1

**Preservatives**

CHORDC1 Antibody is supplied in PBS containing 0.02% sodium azide.

**Form/Appearance**

Liquid

**Concentration**

1 mg/mL

**Storage**

CHORDC1 antibody can be stored at 4°C for three months and -20°C, stable for up to one year. As with all antibodies care should be taken to avoid repeated freeze thaw cycles. Antibodies should not be exposed to prolonged high temperatures.

**Note**

For research use only

**Application notes**

CHORDC1 antibody can be used for detection of CHORDC1 by Western blot at 1 - 2 µg/mL. Antibody can also be used for immunocytochemistry starting at 2.5 µg/mL. For immunofluorescence start at 20 µg/mL. Antibody validated: Western Blot in human samples; Immunocytochemistry in human samples and Immunofluorescence in human samples. All other applications and species not yet tested.

**Isotype**

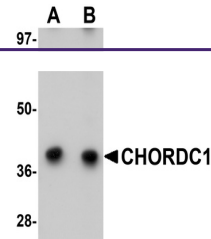
IgG

**Clonality**

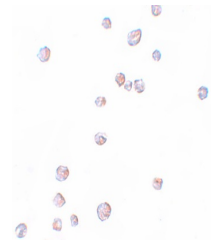
Polyclonal

**Uniprot ID**
[Q9UHD1](#)
**NCBI**
[NP\\_036256](#)
**Dilution Range**

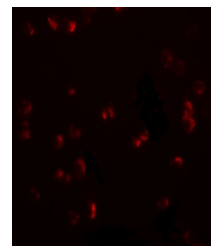
CHORDC1 antibody can be used for detection of CHORDC1 by Western blot at 1 - 2 µg/mL. Antibody can also be used for immunocytochemistry starting at 2.5 µg/mL. For immunofluorescence start at 20 µg/mL. Antibody validated: Western Blot in human samples; Immunocytochemistry in human samples



Western blot analysis of CHORDC1 in 293 ...



Immunocytochemistry of CHORDC1 in 293 ce...



Immunofluorescence of CHORDC1 in 293 cel...